



**Bendix**

# ULTIMATE

SPORTS &  
PERFORMANCE  
DISC ROTORS

CATALOGUE



[WWW.BENDIX.COM.AU](http://WWW.BENDIX.COM.AU)

**OE**  
LOGBOOK  
SERVICING

**LEADING**  
TECHNOLOGY

*Put your foot down  
with confidence™*

# SCAN YOUR VEHICLE

WITH THE

## BENDIX CATALOGUE APP!



The new **Bendix Catalogue App Scan Feature** allows you to easily identify what type of brakes a vehicle requires simply by scanning a **registration plate**, **VIN number** or Bendix **product barcode** with your phone!

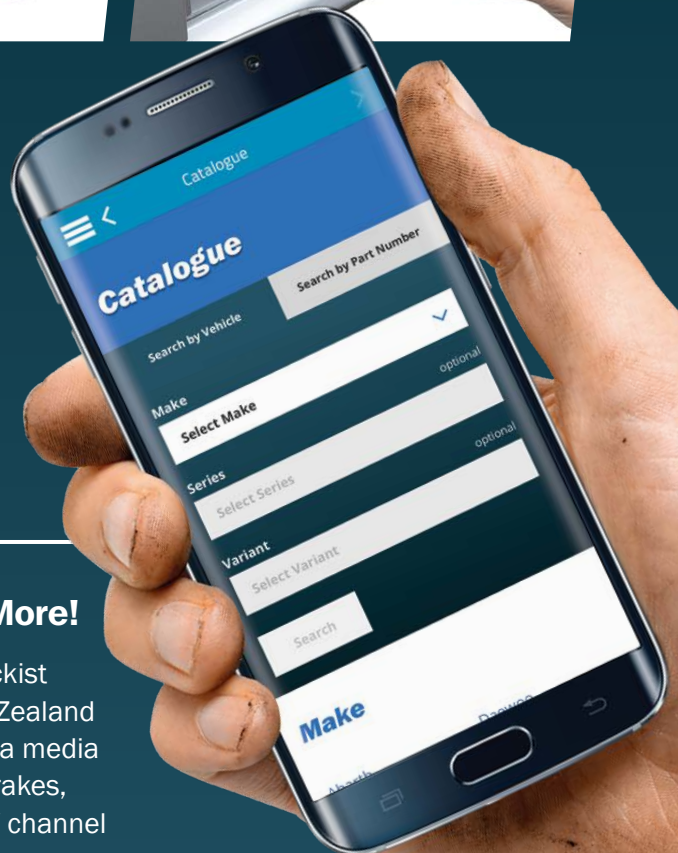
### THE CATALOGUE APP ALSO FEATURES:

#### Fast Catalogue Access

Use the Bendix search engine to quickly find the Bendix part number that fits your job. You can also match an OE/FMSI/WVA or other brake pad part number.

#### Stockists, News & More!

Search for any Bendix stockist across Australia and New Zealand or access industry news via media releases, B-m@ils, Newsbrakes, promotions, the Bendix TV channel and more!



**BRKING NEWS**



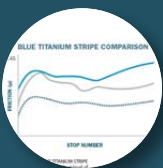
**NEW PART No. RELEASES**



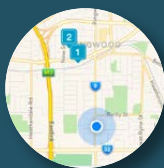
**LATEST PROMOS**



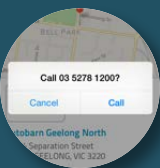
**NOTIFICATIONS**



**PRODUCT INFO**



**LOCAL STOCKISTS**



**CONTACT DIRECTLY**



**CHOICE OF STORES & LOCATIONS**

**DOWNLOAD IT FOR FREE TODAY!**

Free download for Apple and Android devices!



Search Bendix Catalogue



# ULTIMATE

## SPORTS & PERFORMANCE DISC ROTORS CATALOGUE 2019



## CONTENTS

ULTIMATE DISC ROTORS INTRODUCTION	4
ULTIMATE DISC ROTORS TECHNOLOGIES	5
DISC THICKNESS VARIATION	6
THE BENDIX BRAKE SYSTEM GUIDE	7
ULTIMATE DISC ROTORS APPLICATION GUIDE	8-16
ULTIMATE DISC ROTORS IDENTIFICATION	17-25
BRAKE PAD SELECTION GUIDE	27

© 2019 FMP Group (Australia) Pty Ltd.  
Bendix is a trademark of Garrett  
Advancing Motion Inc.

This book is subject to copyright. Except as permitted under the Copyright Act 1968 (Cth), no part of this book may be reproduced or transmitted in any form or by any means, or stored in any retrieval system of any nature, without the prior written permission of the copyright owner.

Whilst every endeavour is made to ensure that the information produced is correct, no responsibility for the contents of this supplement is accepted.

Reproduction of any kind whatsoever, in whole or in part, is subject to our express approval.

For this purpose, please contact the Marketing Department of FMP on (03) 9244 7000 or +61 3 5327 0211 from outside Australia.

For more information call us today:

**FMP Group (Australia) Pty Ltd**

Tel: 1800 819 666 (8am-5pm Mon-Fri EST)  
+61 3 5327 0211 (overseas)

Fax: 1800 805 336

Email: [orders@bendix.com.au](mailto:orders@bendix.com.au)

[www.bendix.com.au](http://www.bendix.com.au)



## ABSOLUTE STOPPING POWER

*Behind every Bendix Ultimate disc brake rotor lies OE expertise, leading technology and precision engineering so you can put your foot down with confidence™.*

Bendix Ultimate Rotors offer the very latest in braking technology and manufacturing processes. Innovative technologies like, HIGH CARBON METALLURGY increases brake performance and stopping power, Diamond Tip Slot that are specifically designed slots and v-shaped dimples to efficiently expel gasses, dirt and water. All completely coated in our advanced protective zinc coating for a SWIFTFIT, allowing for a faster, easier installation. Bendix Ultimate rotors are the perfect complement to the extensive Bendix brake pad range.

These leading technologies combined with Bendix's unparalleled experience and absolute quality assurance ensure the Bendix Ultimate brake disc rotors are ready for the demands of today's vehicles and beyond.

### *A Complete Brake Solution Range from a Trusted Source*

Just like a chain, a braking system is only as strong as its weakest link. As an OEM, Bendix ensures the highest levels of quality and reliability in its products.

Bendix offers its partners in the industry more than just brake discs, also other high-quality components that complement each other perfectly - all from a trusted source.



HIGH CARBON  
METALLURGY

*Quality straight from the casting thanks to proven HIGH CARBON METALLURGY, provides improved thermal stability & conductivity, and reduces the chance of warping when very hot.*

*The highest level of accuracy based on OE specifications for size, diameter and hole spacing for highest reliability and perfect fitting.*



*Diamond Tip Slot's that are specifically designed unidirectional slots and v-shaped dimples to efficiently expel gasses, dirt and water!*



*Faster installation SwiftFit coating for fitting without pre-cleaning, with corrosion inhibitors for a great look and will not degrade over time.*

*Perfect brake cooling and the best possible thermal relief of the brake disc due to the highly effective interior ventilation design.\**

\*Not available in some references.





## HIGH CARBON METALLURGY

Bendix ULTIMATE Rotors incorporate improved noise dampening characteristics and heat dissipation by utilising HIGH CARBON METALLURGY.

The higher carbon formulation increases rotor strength at elevated temperatures, while with the high wear resistance from this increased strength increases rotor durability, reducing the chance of warping when very hot.

- **Improved heat dissipation.**
- **Noise dampening characteristics**
- **Smoother braking feel**
- **Higher thermal conductivity removes heat faster, reducing fade.**
- **Maximizes pad to rotor contact for stronger initial bite**
- **Enhanced iron provides better noise suppression for reduced NVH**

## HIGH CARBON VS STANDARD ROTORS SPECTRAL ANALYSIS

■ HIGH CARBON ■ STANDARD

**HIGHER IS BETTER:**

**CARBON** - Improves co-efficient friction rate

**LOWER IS BETTER:**

**SILICON** - Stabilises strength

**MANGANESE** - Stabilises hardness

**SULFUR** - Stabilises tensile strength

**PHOSPHORUS** - Stabilises friction co-efficient

0% 1% 2% 3% 4%  
MATERIAL PERCENTAGE



## BENDIX VENTILATION SYSTEM:

Specifically designed slots and v-shaped dimples to more efficiently expel gasses, dirt and water.

The balanced pattern has evolved from racing, and allows you to feel absolute control in hard braking situations.

The specifically aligned slots and v-shaped dimples keep your brakes primed and ready for the next corner. Bendix Ultimate rotors use dimples, rather than holes, at the precise depth to give greater braking power, while still retaining the strength of a solid rotor.

- **Performance improvement & fade**
- **Reduction de-gas through dimples**
- **Slots clean pad & face de glaze**
- **True one rotor fits both sides (bi directional)**
- **Diamond tip increases pad bite & self cleans**
- **Great pedal feel for instant response**
- **Dimpled pattern resists cracking seen on cross drilled rotors**
- **Even friction for steady braking experience**
- **Quiet mirrored curved X slot design**

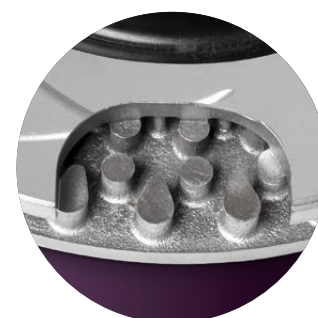
Bendix rotors feature SwiftFit surface protection that allows the rotor to be fitted immediately without the need to clean anti-rust oil or coating from the surface. SwiftFit surface protection prevents corrosion of the rotor resulting in an unlimited shelf life, longer fault free service and a rust free rotor hat which is often visible behind open alloy wheels. Frequently with uncoated conventional rotors, corrosion can impact the rotor mating with the wheel hub face over time and create a vibration that will feel like a wheel imbalance.

- **No cleaning required before fitting**
- **No corrosion**
- **Unlimited shelf life due to Swift Fit surface protection**
- **No vibration caused by corrosion**

The Bendix cooling pillars are engineered to channel cool air into the rotor, expelling hot air faster, and increases resistance to thermal cracks by more than 40%, to keep your brakes prepared for the next stop.

The Bendix cooling pillars pattern guides the air evenly through the rotor, and dissipates the heat evenly, to minimise distortion and deliver the ultimate braking feel.

- **Less empty space reduces cracking propagation**
- **Larger surface area for better heat rejection**
- **Enhanced air turbulence for uniform temperature across the rotor**





## SIGNS OF BRAKE PAD WEAR & UNEVEN PAD WEAR



*Brake pads fall under the consumable category when it comes to car parts. They wear down over time and eventually need replacing. Because of this, it's important to keep an eye on the amount of brake pad material that remains on the brake pads, keeping both your customer and their family safe on the roads.*

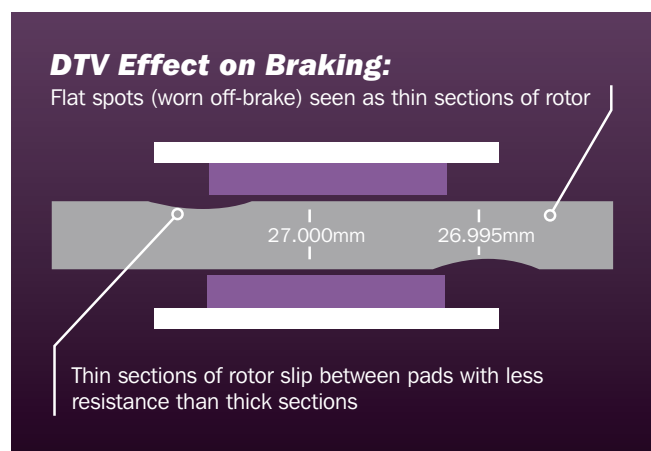
The rate of wear depends on a wide range of variables. Everything from choice of brake pad, driving style, to the condition of the brake rotors or if the brake calipers are working as they're supposed to.

There are a few signs to look out for that will indicate to your customer their brake pads are reaching the end of their service life or wearing unevenly. If the brake pads are on their way out, chances are the driver will start to feel them not working as well as they used to. Another obvious indication you might come across is a squealing sound when hitting the brake pedal.

If your customer is experiencing any of these symptoms, it pays to have a look at the condition of their brake pad. In most cases you should be able to get a good enough look without even having to take off the wheel. Simply have a look inside of the brake calipers and try to gauge the level that their brake pads are sitting at. With Bendix's new **Brake Wear Indicator**, this is as simple as checking the imprint on the edge of the pad marked 'REPLACE'. This will give a clear indication on how much life the brake pads have left. If you notice that one pad has worn down a

considerable amount more than another pad, then they have uneven brake pad wear.

A common root of the problem is DTV (Disc Thickness Variation). Variation in the thickness of the rotors chew away at the brake pad as they come in contact with high points in the disc, causing the pad to wear unevenly.



Depending on the extent of the impact of DTV on the rotors, they can be machined to iron out any high points.

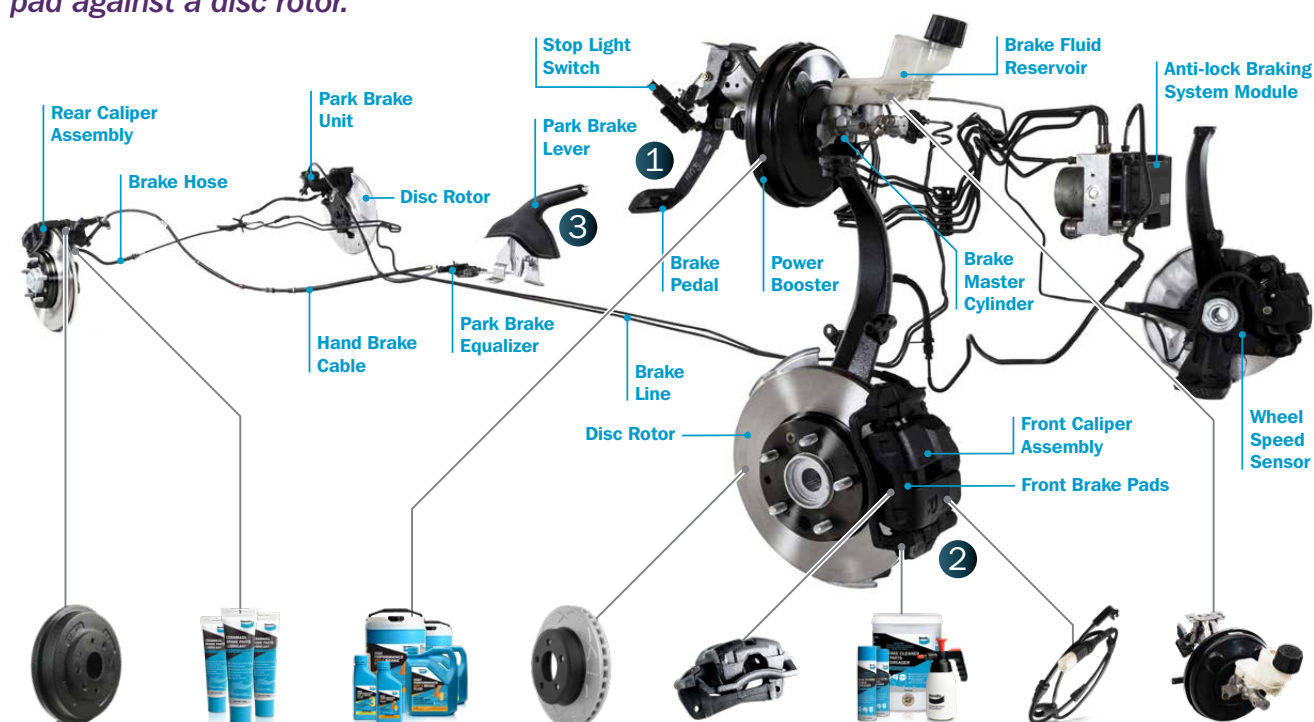
Brake pads are one of the most important components of the vehicle's entire braking system. Being a wear item, it's important to make sure they're in good condition and always replace all brake pads on the axle!

**Performing regular maintenance on the braking system will help ensure your customer gets the most out of your brake pads.**

Find out more by watching the video at:  
[www.youtube.com/BendixTV](https://www.youtube.com/BendixTV)



*Of all the components in the system, the friction material on the disc brake pad or lining is what finally stops the car, so when you apply the brakes, hydraulic pressure forces the disc pad against a disc rotor.*



## REAR PARK BRAKE

The park brake system can operate through the rear disc pads or a shoe and drum brake system. The park brake should be regularly checked and/or adjusted to ensure correct operation and the brake linings should not be allowed to wear past the manufacturer's recommendations.

## BRAKE LUBRICANT

The Bendix Ceramasil Brake Parts Lubricant is designed specifically for brake parts with metal to metal and metal to rubber contact areas, and should be applied with every brake pad change, giving absolute confidence in each job.

## BRAKE FLUID

Bendix DOT3 & DOT4 Brake Fluid can be used for both hydraulic & conventional brake systems, minimising corrosion. This fluid is also inert to all kinds of rubber, and meets stringent Australian and U.S. specifications.

## DISC ROTOR

The clamping force applied by the brake pads against the disc rotor slows or stops the rotation of the wheels. Disc rotors should be regularly checked for excessive wear and distortion. When machining or installing new disc rotors ensure they have been cleaned thoroughly with brake cleaner to remove any contaminants.

## CALIPER ASSEMBLY

When the brake pedal is applied, brake fluid is forced into the caliper moving the piston and brake pads against the rotor. Calipers should be thoroughly checked to ensure all parts are working correctly and smoothly. Inefficient calipers can cause low performance and excessive wear of pads and disc rotors.

## BRAKE/PARTS CLEANER

When changing brake pads, always use Bendix Brake Cleaner & Parts Degreaser to clean brake components and the rotor surface especially after machining. Bendix Brake Cleaner & Parts Degreaser penetrates rapidly, cleans instantly and evaporates quickly, leaving no residue.

## BRAKE WEAR SENSORS

Electronic Brake Wear Sensors are an added safety feature on many vehicles used to warn a vehicle's driver when their brake pads are at the end of their service life.

## BRAKE FLUID RESERVOIR

Brake fluid should be flushed and replaced at least once every two years, using new fluid from a sealed container. Ensure correct fluid type is used, and ensure no air is trapped in the system as this will result in poor braking. Any loss of brake fluid indicates a serious fault in the brake system and needs to be investigated.

1

## HOW DO BRAKES WORK?

Applying the brake pedal activates a power booster forcing hydraulic brake fluid through the master cylinder and combination valve, via brake lines to all four wheels.

2

## DISC BRAKES

The wheel assembly consists of a wheel hub and disc rotor with a caliper housing the disc brake pads. A piston in each caliper forces the disc brake pad against the rotor, creating the necessary friction to stop the rotor spinning.

Two disc brake pads on each wheel, an inner and outer, act simultaneously to bring the car to a halt. Many cars are equipped with disc brakes front and rear.

3

## PARK BRAKES

The park brake is applied through either an electronic system or a cable system which operates the rear brakes only.

## HOW OFTEN?

Brakes are out of sight and generally out of mind. Your brake system should be thoroughly checked once a year as a minimum. In as little as fifteen minutes, a brake specialist can give your car's braking system a safety check.

NOTE: Brakes are a critical safety system of a vehicle. The brake system should not be interfered with by anybody who does not have the appropriate skills and experience. Brake pads should be replaced by a qualified mechanic.

Check out the online 3-D guide at: [www.bendix.com.au/help/the-bendix-brake-system-guide-an-intro-to-bendix-disc-brake-function-and-maintenance](http://www.bendix.com.au/help/the-bendix-brake-system-guide-an-intro-to-bendix-disc-brake-function-and-maintenance)



# ULTIMATE DISC BRAKE ROTORS APPLICATION GUIDE

MODEL	SERIES	YEAR	ENGINE	VEHICLE SPECIFICS	FITTING POS.	ROTOR PART #	DIMENSIONS (mm)			MATCHING BRAKE PAD
							A	D	B	

## AUDI

Q7	4LB	3/06 - 8/15	3.0, 3.0TD, 3.6, 4.2, 4.2TD	PR Code 1LF PR Code 1KF	Front	BR2246	350	69	34	DB2246
					Rear	BR2245	330	74	28	DB1677

## BMW

X5	E53	5/00 - 12/06	3.0, 3.0D, 4.4		Front	BR813	332	62	30	DB1409
X5	E70	9/08 - 6/13	3.0, 3.0D, 4.8		Front	BR2864	348	62	30	DB2006
X5	F15, F85	12/13 - 7/18	3.0D	xDrive 40d	Front	BR2864	348	62	30	DB2006
X6	E71, E72	6/07 - 7/14	3.0, 3.0D	xDrive 35i, xDrive 30d	Front	BR2864	348	62	30	DB2006

## CHEVROLET

CAMARO	ZL1	9/11 - 12/15	6.2L LSA	6 Piston Brembo Caliper	Front	BR2604	355	50	32	DB2375
--------	-----	--------------	----------	-------------------------	-------	--------	-----	----	----	--------

## FORD

FAIRLANE	AUII, AUIII	3/1999 - 8/02	4.0, 5.0		Front	BR502	287	65	28	DB1375
					Rear	BR503	287	51	16	DB1376
FAIRMONT	BF	10/05 - 4/08	4.0, 5.4	Ghia	Front	BR2107	322	68	28	DB1473
					Rear	BR2108	328	58.5	26	DB1675
FALCON	AU	7/1999 - 4/00	4.0L	S, SR, XT, XR6, XR6T All models incl. Ute	Front	BR502	287	65	28	DB1108
					Rear	BR503	287	51	16	DB1376
FALCON	AUII, AUIII	4/00 - 9/02	4.0L	S, SR, XT, XR6, XR6T All models incl. Ute	Front	BR502	287	65	28	DB1375
					Rear	BR503	287	51	16	DB1376
FALCON	AU, AUII, AUIII	4/00 - 9/02	5.0, 5.6	XR8, XR8 Pursuit Standard Brake	Front	BR502	287	65	28	DB1375
					Rear	BR503	287	51	16	DB1376
FALCON	AU, AUII, AUIII	4/00 - 9/02	5.0, 5.6	XR8, XR8 Pursuit Premium 4 Piston Caliper	Front	BR9607	355	50.5	32	DB1353
					Rear	BR503	287	51	16	DB1376
FALCON	TICKFORD AUII, AUIII	10/99 - 12/02	5.0L, 5.6L	TE50, TL50, TS50 287 mm Front Rotor	Front	BR502	287	65	28	DB1375
					Rear	BR503	287	51	16	DB1376
FALCON	TICKFORD AUII, AUIII	10/99 - 12/02	5.0L, 5.6L	TE50, TL50, TS50 Premium 4 Piston Caliper	Front	BR9607	355	50.5	32	DB1353
					Rear	BR9608	330	52	28	DB1354
FALCON	BA	10/02 - 9/05	4.0, 4.0T Barra 5.4L Boss 260	SR, XT, XR6, XR6T, XR8, RTV Includes Ute	Front	BR504	298	65	28	DB1473
					Rear	BR505	303	51	16	DB1376
FALCON	BA XR8 - Upgrade	10/02 - 9/05	5.4L Boss 260	Performance Brake Performance C5 C6 Caliper	Front	BR2107	322	68	28	DB1473
					Front	BR2107	322	68	28	DB1868
					Rear	BR505	303	51	16	DB1376
FALCON	BAX R8 Ute		5.4	Standard Brake	Front	BR504	298	65	28	DB1473
					Rear	BR505	303	51	16	DB1376
FALCON	BAX R8 Ute - Upgrade		5.4	Performance Brake	Front	BR2107	322	68	28	DB1473
					Rear	BR2108	328	58.5	26	DB1675
FALCON	BF	10/05 - 4/08	4.0L Barra 190	Standard Brake	Front	BR504	298	65	28	DB1473
					Rear	BR505	303	51	16	DB1376
FALCON	BF	10/05 - 4/08	4.0L Barra 190	Performance Brake	Front	BR2107	322	68	28	DB1473
					Rear	BR505	303	51	16	DB1376
FALCON	BF XR6, XR6 Turbo	10/05 - 4/08	4.0, 4.0T Barra 245T		Front	BR2107	322	68	28	DB1473
					Rear	BR2108	328	58.5	26	DB1675



MODEL	SERIES	YEAR	ENGINE	VEHICLE SPECIFICS	FITTING POS.	ROTOR PART #	DIMENSIONS (mm)			MATCHING BRAKE PAD
							A	D	B	
FORD <i>continued</i>										
FALCON	BF	10/05 - 4/08	5.4L Barra 220	Standard Brake	Front	BR504	298	65	28	DB1473
					Rear	BR505	303	51	16	DB1376
FALCON	BF	10/05 - 4/08	5.4L Barra 220	Performance Brake	Front	BR2107	322	68	28	DB1473
					Rear	BR2108	328	58.5	26	DB1675
FALCON	BF XR8	10/05 - 4/08	5.4L Boss 260		Front	BR2107	322	68	28	DB1473
					Rear	BR2108	328	58.5	26	DB1675
FALCON	FG	1/12 - 12/14	2.0 EcoBoost	XT EcoBoost	Front	BR504	298	65	28	DB1473
				G6 EcoBoost	Rear	BR505	303	51	16	DB1376
FALCON	FG	2/08 - 12/14	4.0L Barra 156, 195, 198	XT, LPG, EcoLPi	Front	BR504	298	65	28	DB1473
					Rear	BR505	303	51	16	DB1376
FALCON	FG	2/08 - 12/14	4.0 Barra 195	G6, G6E, XR6 Standard Brake	Front	BR504	298	65	28	DB1473
					Rear	BR505	303	51	16	DB1376
FALCON	FG	2/08 - 12/14	4.0 Barra 195	G6, G6E, XR6 Performance Brake	Front	BR2107	322	68	28	DB1473
					Rear	BR2108	328	58.5	26	DB1675
FALCON	FG	2/08 - 12/14	4.0T Barra 270T	XR6T	Front	BR2107	322	68	28	DB1473
					Rear	BR505	303	51	16	DB1376
FALCON	FG	2/08 - 12/14	5.4 Boss 290	XR8	Front	BR9607	355	50.5	32	DB1473
					Rear	BR2108	328	58.5	26	DB1675
FALCON	FG-X	11/14 on	2.0 EcoBoost	EcoBoost	Front	BR504	298	65	28	DB1473
					Rear	BR505	303	51	16	DB1376
FALCON	FG-X	11/14 on	4.0L LPI	XR6 LPI, G6E Lpi	Front	BR504	298	65	28	DB1473
					Rear	BR505	303	51	16	DB1376
FALCON	FG-X	11/14 on	4.0i Barra 195	4.0i, XR6, G6E	Front	BR504	298	65	28	DB1473
					Rear	BR505	303	51	16	DB1376
FALCON	FG-X	11/14 on	4.0T Barra 270T	XR6 Turbo, XR8	Front	BR2107	322	68	28	DB1473
					Rear	BR2108	328	58.5	26	DB1675
FALCON	FG-X	1/16 on	4.0L	XR6 Sprint Brembo Caliper	Front	BR9607	355	50.5	32	DB1845
					Rear	BR2108	328	58.5	26	DB1936
FALCON	FG-X	1/16 on	5.0L	XR8 Sprint Brembo Caliper	Front	BR9607	355	50.5	32	DB1845
					Rear	BR2108	328	58.5	26	DB1936
MUSTANG	FM, FN	12/14 on	2.3T		Front	BR2164	352	64	32	DB2475
					Rear	BR2165	330	43.7	25	DB2412
MUSTANG	FM, FN	12/14 on	5.0L	Standard Brake	Front	BR2164	352	64	32	DB2409
					Rear	BR2165	330	43.7	25	DB2412
MUSTANG	FM, FN	12/14 on	5.0L	Brembo Caliper	Front	BR2166	380	64	34	DB2409
					Rear	BR2165	330	43.7	25	DB2412
TERRITORY	SX, SY	5/04 - 5/11	4.0L	Non-turbo	Front	BR2107	322	68	28	DB1473
					Rear	BR2108	328	58.5	26	DB1675
TERRITORY	SY	7/06 - 5/11	4.0T AWD Barra 245T	AWD Turbo Brembo Caliper	Front	BR9607	355	50.5	32	DB1868
					Rear	BR2108	328	58.5	26	DB1675
TERRITORY	SZ	5/11 on	4.0L, 2.7TD		Front	BR2107	322	68	28	DB1473
					Rear	BR2108	328	58.5	26	DB1675
RANGER	PX, PXII, PXIII	11/11 on	2.0TT, 2.2, 3.2	All - Except Raptor	Front	BR2132	302	61	32	DB2074

# ULTIMATE DISC BRAKE ROTORS APPLICATION GUIDE

MODEL	SERIES	YEAR	ENGINE	VEHICLE SPECIFICS	FITTING POS.	ROTOR PART #	DIMENSIONS (mm)			MATCHING BRAKE PAD
							A	D	B	
FPV										
COBRA	BF	11/05 - 12/07	5.4L Boss 302		Front	BR9607	355	50.5	32	DB1935
					Rear	BR9608	330	51	28	DB1936
F6, F6-E	FG	5/08 - 12/14	4.0T Barra 310	Standard Brake	Front	BR9607	355	50.5	32	DB1935
					Rear	BR2108	328	58.5	26	DB1675
F6, F6-E	FG	5/08 - 12/14	4.0T Barra 310	Brembo Caliper	Front	BR9607	355	50.5	32	DB1935
					Rear	BR9608	330	51	28	DB1936
F6 TYPHOON	BA	10/04 - 1/05	4.0T Barra 270T	Blue FPV 2 Piston Calipers	Front	BR9607	355	50.5	32	DB1868
					Rear	BR505	303	303	51	DB1376
F6 TORNADO, TYPHOON	BF	11/05 - 12/07	4.0T Barra 270T	Brembo 4 & 6 Piston Caliper	Front	BR9607	355	50.5	32	DB1935
					Rear	BR9608	330	51	28	DB1936
F6X		5/08 - 12/14	4.0T Barra 270T	Brembo 4 & 6 Piston Caliper	Front	BR9607	355	50.5	32	DB1845
					Rear	BR9608	330	51	28	DB1936
GS, PURSUIT	FG	10/10 - 12/14	5.0L	Standard Brake	Front	BR2107	322	68	28	DB1473
					Rear	BR2108	328	58.5	26	DB1936
GS, PURSUIT	FG	10/10 - 12/14	5.0L	Brembo Caliper	Front	BR9607	355	50.5	32	DB1935
					Rear	BR9608	330	51	28	DB1936
GS Super-charged	FG	10/10 - 12/14	5.0S	Standard Brake	Front	BR2107	322	68	28	DB1473
					Rear	BR2108	328	58.5	26	DB1936
GS Super-charged	FG	10/10 - 12/14	5.0S	Brembo Caliper	Front	BR9607	355	50.5	32	DB1935
					Rear	BR9608	330	51	28	DB1936
GT	BA	10/04 - 1/06	5.4L Boss 290	Blue FPV 2 Piston Calipers	Front	BR9607	355	50.5	32	DB1868
					Rear	BR505	303	303	51	DB1376
GT	BA	10/04 - 1/06	5.4L Boss 290	Brembo 4 Piston Caliper	Front	BR9607	355	50.5	32	DB1935
					Rear	BR505	303	303	51	DB1936
GT	BA	10/04 - 1/06	5.4L Boss 290	Brembo 6 Piston Caliper and 330mm rear rotor	Front	BR9607	355	50.5	32	DB1845
					Rear	BR9608	330	51	28	DB1936
GT, FORCE 6	BF	11/05 - 12/07	5.4L Boss 290	Brembo 4 Piston Caliper	Front	BR9607	355	50.5	32	DB1935
					Rear	BR2108	328	58.5	26	DB1936
GT, FORCE 6	BF	11/05 - 12/07	5.4L Boss 290	Brembo 6 Piston Caliper	Front	BR9607	355	50.5	32	DB1845
					Rear	BR2108	328	58.5	26	DB1936
GT, GT-E	FG	5/08 - 12/14	5.4L		Front	BR9607	355	50.5	32	DB1935
					Rear	BR2108	328	58.5	26	DB1936
GT-E, GT-P	FG	10/10 - 12/14	5.0S Boss 335	Standard Brake	Front	BR9607	355	50.5	32	DB1935
					Rear	BR2108	328	58.5	26	DB1936
GT-E, GT-P	FG	10/10 - 12/14	5.0S Boss 335	Brembo Caliper	Front	BR9607	355	50.5	32	DB1935
					Rear	BR9608	330	51	28	DB1936
GT-F	FG	6/14 on	5.0S Boss 335	Brembo 6 Piston Caliper	Front	BR9607	355	50.5	32	DB1845
					Rear	BR9608	330	51	28	DB1936
GT-P	BA	10/04 - 1/06	5.4L Boss 290	Brembo 4 Piston Caliper	Front	BR9607	355	50.5	32	DB1395
					Rear	BR2108	328	58.5	26	DB1936
GT-P	BA	10/04 - 1/06	5.4L Boss 290	Brembo 6 Piston Caliper	Front	BR9607	355	50.5	32	DB1845
					Rear	BR9608	330	51	28	DB1936
GT-P	BF	11/05 - 12/07	5.4L Boss 290	Brembo 6 Piston Caliper	Front	BR9607	355	50.5	32	DB1935
					Rear	BR9608	330	51	28	DB1936



MODEL	SERIES	YEAR	ENGINE	VEHICLE SPECIFICS	FITTING POS.	ROTOR PART #	DIMENSIONS (mm)			MATCHING BRAKE PAD
							A	D	B	

## FPV *continued*

GT-P	FG	5/08 - 10/10	5.4L	Brembo 4 Piston Caliper	Front	BR9607	355	50.5	32	DB1935
					Rear	BR9608	330	51	28	DB1936
GT-P	FG	5/08 - 10/10	5.4L	Brembo 6 Piston Caliper	Front	BR9607	355	50.5	32	DB1845
					Rear	BR9608	330	51	28	DB1936
PURSUIT	BA	10/04 - 1/06	5.4L Boss 290	FPV PBR Blue 4 Piston Fr FPV PBR Blue 2 Piston Rear	Front	BR9607	355	50.5	32	DB1868
					Rear	BR505	303	303	51	DB1376
PURSUIT	BA	10/04 - 1/06	5.4L Boss 290	Brembo 4 Piston Caliper	Front	BR9607	355	50.5	32	DB1935
					Rear	BR2108	328	58.5	26	DB1936
SUPER PURSUIT	BA	10/04 - 1/06	5.4L Boss 290		Front	BR9607	355	50.5	32	DB1868
					Rear	BR2108	328	58.5	26	DB1936
PURSUIT	BF	4/05 - 12/07	5.4L Boss 290		Front	BR9607	355	50.5	32	DB1935
					Rear	BR2108	328	58.5	26	DB1936
SUPER PURSUIT	BF	11/05 - 12/07	5.4L Boss 290		Front	BR9607	355	50.5	32	DB1935
					Rear	BR2108	328	58.5	26	DB1936
SUPER PURSUIT	FG	5/08 - 10/10	5.4L		Front	BR9607	355	50.5	32	DB1935
					Rear	BR2108	328	58.5	26	DB1936

## HOLDEN

CALAIS	VT, VX, VY, VZ	9/97 - 10/00	3.8L, 3.8SC 5.0, 5.7, 6.0		Front	BR040	296	83	28	DB1331
					Rear	BR041	286	78.6	16	DB1332
COLORADO	RG	6/12 - 1/17	2.8TD	Flat rotor (not hat type)	Front	BR2060	300	40	27	DB1841
					Rear	Drum				BS5018
COMMODORE	VT, VX, VY, VZ	9/97 - 8/02	3.8L, 3.8SC 5.0, 5.7, 6.0		Front	BR040	296	83	28	DB1331
					Rear	BR041	286	78.6	16	DB1332
COMMODORE	VE	7/06 - 10/13	3.0, 3.6		Front	BR2026	298	52.2	30	DB1765
					Rear	BR2027	302	56	22	DB1766
COMMODORE	VE	7/06 - 10/13	6.0L		Front	BR2026	298	52.2	30	DB1765
					Rear	BR2029	324	56	22	DB1766
COMMODORE	VE	7/06 - 10/13	6.0L Redline		Front	BR2604	355	50	32	DB2358
					Rear	BR2029	324	56	22	DB1766
COMMODORE	VF	5/13 - 12/14	3.0, 3.6		Front	BR2026	298	52.2	30	DB2266
					Rear	BR2027	302	56	22	DB2267
COMMODORE	VF	5/13 - 9/15	6.0L SS, SSV		Front	BR2028	321	52	30	DB2266
					Rear	BR2029	324	56	22	DB2267
COMMODORE	VF	5/13 - 9/15	6.0L Redline		Front	BR2604	355	52	30	DB2358
					Rear	BR2029	324	56	22	DB2267
COMMODORE	VF	9/15 on	6.2L		Front	BR2028	321	52	30	DB2266
					Rear	BR2029	324	56	22	DB2267
COMMODORE	VFII	9/15 on	6.2L Redline	4 Piston Brembo	Front	BR2604	355	50	32	DB2358
					Rear	BR2029	324	56	22	DB2260
MONARO	V2	12/01 - 9/04	3.8, 5.7	Standard Brakes	Front	BR040	296	83	28	DB1331
					Rear	BR041	286	78.6	16	DB1332
UTE	VU	12/00 - 9/02	3.8, 5.7		Front	BR040	296	83	28	DB1331
					Rear	BR041	286	78.6	16	DB1332

# ULTIMATE DISC BRAKE ROTORS APPLICATION GUIDE

MODEL	SERIES	YEAR	ENGINE	VEHICLE SPECIFICS	FITTING POS.	ROTOR PART #	DIMENSIONS (mm)			MATCHING BRAKE PAD
							A	D	B	
HSV										
CLUBSPORT, MANTA	VT	1/1997 - 10/00	5.0, 5.7	LS1	Front	BR040	296	83	28	DB1331
					Rear	BR041	286	78.6	16	DB1332
CLUBSPORT, MANTA	VT	1/1997 - 10/00	5.0, 5.7	PBR Performance Brake	Front	BR048	330	82.5	32	DB1868
					Rear	BR049	315	71	18	DB1356
SENATOR	VT	9/1997 - 6/1999	5.0, 5.7	LS1	Front	BR040	296	83	28	DB1331
					Rear	BR041	286	78.6	16	DB1332
SENATOR	VT	9/1997 - 6/1999	5.0, 5.7	PBR Performance Brake	Front	BR048	330	82.5	32	DB1868
					Rear	BR049	315	71	18	DB1356
SENATOR	VT	9/1997 - 6/1999	5.0, 5.7	Harrop Premium Brake	Front	BR055	343	82.5	32	DB1355
					Rear	BR049	315	71	18	DB1356
XU6, XU8	VT	3/1998 - 10/00	3.8S, 5.0		Front	BR040	296	83	28	DB1331
					Rear	BR041	286	78.6	16	DB1332
XU6	VX	9/00 - 10/02	3.8S		Front	BR040	296	83	28	DB1331
					Rear	BR041	286	78.6	16	DB1332
CLUBSPORT, SENATOR	VX	9/00 - 9/02	5.7L	LS1	Front	BR040	296	83	28	DB1331
					Rear	BR041	286	78.6	16	DB1332
CLUBSPORT, SENATOR	VX	9/00 - 9/02	5.7L	PBR Performance Brake	Front	BR048	330	82.5	32	DB1868
					Rear	BR049	315	71	18	DB1356
CLUBSPORT, SENATOR	VX	9/00 - 9/02	5.7L	Harrop Premium Brake	Front	BR055	343	82.5	32	DB1355
					Rear	BR049	315	71	18	DB1356
GTS	VX	9/00 - 8/01	5.7L		Front	BR055	343	82.5	32	DB1355
					Rear	BR049	315	71	18	DB1356
MALOO	VY	10/02 - 9/04	5.7L		Front	BR048	330	82.5	32	DB1868
					Rear	BR049	315	71	18	DB1356
MALOO	VY	10/02 - 9/04	5.7L	Harrop Premium Brake	Front	BR055	343	82.5	32	DB1355
					Rear	BR049	315	71	18	DB1356
CLUBSPORT, SENATOR	VY	10/02 - 9/04	5.7L		Front	BR048	330	82.5	32	DB1868
					Rear	BR049	315	71	18	DB1356
CLUBSPORT, SENATOR	VY	10/02 - 9/04	5.7L	Harrop Premium Brake	Front	BR055	343	82.5	32	DB1355
					Rear	BR049	315	71	18	DB1356
GTS	VY	10/02 - 9/04	5.7L		Front	BR048	330	82.5	32	DB1868
					Rear	BR049	315	71	18	DB1356
GTS	VY	10/02 - 9/04	5.7L	Harrop Premium Brake	Front	BR055	343	82.5	32	DB1355
					Rear	BR049	315	71	18	DB1356
MALOO	VZ	10/04 - 9/07	6.0L		Front	BR048	330	82.5	32	DB1868
					Rear	BR049	315	71	18	DB1356
MALOO	VZ	10/04 - 9/07	6.0L	Harrop Premium Brake	Front	BR055	343	82.5	32	DB1355
					Rear	BR049	315	71	18	DB1356
CLUBSPORT, SENATOR	VZ	10/04 - 12/06	6.0L		Front	BR048	330	82.5	32	DB1868
					Rear	BR049	315	71	18	DB1356
CLUBSPORT, SENATOR	VZ	10/04 - 12/06	6.0L	Harrop Premium Brake	Front	BR055	343	82.5	32	DB1355
					Rear	BR049	315	71	18	DB1356



MODEL	SERIES	YEAR	ENGINE	VEHICLE SPECIFICS	FITTING POS.	ROTOR PART #	DIMENSIONS (mm)			MATCHING BRAKE PAD
							A	D	B	

## HSV *continued*

COUPE 4	VZ	4/04 - 4/06	5.7L		Front	BR048	330	82.5	32	DB1868
					Rear	BR049	315	71	18	DB1356
MALOO	VE	10/07 - 5/13	6.0, 6.2		Front	BR9605	365	54	32	DB1937
					Rear	BR9606	350	51.5	26	
CLUBSPORT, SENATOR	VE	8/06 - 5/13	6.0, 6.2		Front	BR9605	365	54	32	DB1937
					Rear	BR9606	350	51.5	26	

## ISUZU

D MAX	TFR, TFS	6/12 on	3.0TD	RWD, AWD	Front	BR2060	300	40	27	DB1841
					Rear	Drum				BS5018
MU-X		11/13 on	3.0TD	RWD, AWD With Rear Disc	Front	BR2060	300	40	27	DB1841
					Rear	BR2061	318	80	18	DB2368

## JEEP

GRAND CHEROKEE	SRT, SRT8	3/11 on	6.4L		Front	BR2632	380	54	34	DB2375
					Rear					DB2260

## MAZDA

BT-50	UP, UR	11/11 on	3.2	All	Front	BR2132	302	61	32	DB2074
					Rear	Drum				BS5021

## MITSUBISHI

LANCER	EVO V, VI, VII, VIII, IX	1/98 - 1/2007	2.0T	Brembo Front/Brembo Rear	Front	BR418	320	43.5	32	DB1678
					Rear	BR418	320	43.5	32	DB1521
LANCER	EVO V, VI, VII, VIII	1/98 - 3/2005	2.0T	Brembo Front/Akebono Rear	Front	BR418	320	43.5	32	DB1478
					Rear	BR418	320	43.5	32	DB1238
LANCER	EVO IX	3/2005 - 1/2007	2.0T	Brembo Front/Akebono Rear	Front	BR418	320	43.5	32	DB1678
					Rear	BR418	320	43.5	32	DB1686
PAJERO	NM,NP	5/00 - 7/02	2.8TD		Front	BR660	290	46	26	DB1482
					Rear	BR661	300	72	22	DB1200
PAJERO	NM,NP	11/06 - 12/13	3.2D, 3.8 V6	290 mm front	Front	BR660	290	46	26	DB1482
					Rear	BR661	300	72	22	DB1200
PAJERO	NM,NP	11/06 - 12/13	3.2D, 3.8 V6	322 mm front	Front	BR2216	332	56.7	28	DB1482
					Rear	BR661	300	72	22	DB1200
TRITON	ML, MN, MQ, MR	11/05 - 12/15	2.4TD, 2.5TD, 3.2D, 3.5	All	Front	BR2208	295	46.5	28	DB1774
					Rear	Drum				BS1594

## NISSAN

NAVARA	D23 (NP300)	7/14 on	2.3TD, 2.5D	All	Front	BR2332	296	53	28	DB2374
					Rear	Drum				BS5238
PATROL	GU	1/1988 - 12/12	2.8TD, 3.0TD,		Front	BR625	306	47	32	DB1361
					Rear	BR622	315	80	18	DB1148
PATROL	GU	1/1988 - 12/12	4.2, 4.2D, 4.5	Not 4.8	Front	BR625	306	47	32	DB1361
					Rear	BR622	315	80	18	DB1148

# ULTIMATE DISC BRAKE ROTORS APPLICATION GUIDE

MODEL	SERIES	YEAR	ENGINE	VEHICLE SPECIFICS	FITTING POS.	ROTOR PART #	DIMENSIONS (mm)			MATCHING BRAKE PAD
							A	D	B	

## PORSCHE

CAYENNE	9PA	9/02 - 9/10	3.0TD, 3.6, 4.5, 4.5T, 4.8T		Front	BR2246	350	69	34	DB1676
					Rear	BR2245	330	74	28	DB1677
CAYENNE	92A	6/10 on	3.0, 3.0D, 3.6, 4.8, 4.8T		Front	BR2246	350	69	34	
					Rear	BR2245	330	74	28	

## SUBARU

BRZ	Z1	6/12 on	2.0L	277mm rotor	Front	BR648	277	57	24	DB1491
					Rear					DB1789
BRZ	Z1	6/12 on	2.0L	294mm rotor	Front	BR650	294	57	24	DB1491
					Rear					DB1789
FORESTER	79V	8/1997 - 9/02	2.0L, 2.0T	EJ202, EJ205	Front	BR648	277	57	24	DB1342
					Rear					DB1379
FORESTER	S3	12/03 - 4/13	2.0, 2.0D, 2.5, 2.5T		Front	BR650	294	57	24	DB1491
					Rear					DB1803
IMPREZA	GM, GC, GF	11/92 - 9/1998	2.0, 2.0T	EJ20E,EJ201,EJ20 Turbo	Front	BR648	277	57	24	DB1186
					Rear					
IMPREZA	GD,GD9,GG	9/99 - 12/07	2.0L	EJ201	Front	BR648	277	57	24	DB1170
					Rear					DB1220
IMPREZA	GD	1/01 - /02	2.0, 2.5	EJ204,EJ25,EJ251,FB20, FB20B	Front	BR648	277	57	24	DB1491
					Rear					DB1379
IMPREZA	GD	/03 - /06	2.0, 2.5	EJ204,EJ25,EJ251,FB20, FB20B	Front	BR648	277	57	24	DB1491
					Rear					DB1672
IMPREZA	GD	/07 - 11/16	2.0, 2.5	EJ204,EJ25,EJ251,FB20, FB20B	Front	BR648	277	57	24	DB1491
					Rear					DB1803
IMPREZA	GM, GC, GF, GG	9/1998 - 12/06	2.0, 2.0T, 2.5	WRX, WRX STi EJ205, EJ205P	Front	BR650	294	57	24	DB1170
					Rear					
IMPREZA	GD, GG	12/01 - 12/08	2.0, 2.5	2.0 AWD, WRX EJ205,EJ207,EJ255	Front	BR650	294	57	24	DB1491
					Rear					
LIBERTY	BE, BH, BT	10/98 - 8/03	2.5L	EJ25	Front	BR648	277	57	24	DB1170
					Rear					
LIBERTY	BF, BJ	10/91 - 7/94	2.0L	RS EJ20-GN	Front	BR648	277	57	24	DB1185
					Rear					
LIBERTY	BE, BH, BT	9/96 - 8/03	2.0, 2.5	EJ201,EJ25,EJ205D	Front	BR648	277	57	24	DB1342
					Rear					
LIBERTY	BL, BP	9/03 - 7/07	2.0, 2.5	EJ25, EJ202	Front	BR648	277	57	24	DB1722
					Rear					
LIBERTY	BM, BR	9/07 - 12/14	2.5L	EJ25, EJ253,FB25,FB25A,FB25B	Front	BR648	277	57	24	DB1491
					Rear					
LIBERTY	BM, BR	9/09 - 12/14	2.5L	EJ253, FB25,FB25A,FB25B	Front	BR650	294	57	24	DB1491
					Rear					
LIBERTY	BL, BP	9/03 - 7/07	2.0, 2.5	EJ20X,EJ204,EJ25, EJ20 Turbo	Front	BR650	294	57	24	DB1722
					Rear					
OU CK	BL, BP, BM, BR	11/03 - 1/15	2.0D, 2.5, 3.0	EE20Z, EJ25D, EZ30	Front	BR650	294	57	24	DB1491
					Rear					



MODEL	SERIES	YEAR	ENGINE	VEHICLE SPECIFICS	FITTING POS.	ROTOR PART #	DIMENSIONS (mm)			MATCHING BRAKE PAD
							A	D	B	

## SUBARU *continued*

XV	GP7	12/11 - 5/17	2.0L	FB20B	Front	BR650	294	57	24	DB1491
					Rear					DB1803

## TOYOTA

86		3/12 on	2.0L	277mm	Front	BR648	277	57	24	DB1491
					Rear					DB1803
86		3/12 on	2.0L	294mm Dynamic Pack	Front	BR650	294	57	24	DB1491
					Rear					DB1789
FORTUNER	GUN156	10/15 on	2.8D	4WD	Front	BR2700	338	68	28	DB2380
					Rear					DB1200
HILUX	AN10 (TGN16)	10/08 - 5/15	2.7 2TR-FE	RWD	Front	BR2716	319	67.5	28	DB1741
					Rear					BS1768
HILUX	AN20 (KUN26)	2/05 - 2011	3.0D 1KD-FTV	4WD no VSC	Front	BR2714	297	67.5	25	DB1739
					Rear					BS5008
HILUX	AN20 (GGN25)	2/05 - 2011	4.0L 1GR-FE	4WD no VSC	Front	BR2714	297	67.5	25	DB1739
					Rear					BS5008
HILUX	AN20 (KUN26)	10/08 - 2011	3.0D 1KD-FTV	4WD with VSC	Front	BR2716	319	67.5	28	DB1482
					Rear					BS5008
HILUX	AN20 (GGN25)	10/08 - 2011	4.0L 1GR-FE	4WD with VSC	Front	BR2716	319	67.5	28	DB1482
					Rear					BS5008
HILUX	N120 (GUN123)	7/15 on	2.8D	RWD with VSC	Front	BR2716	319	67.5	28	DB2396
					Rear					BS5215
HILUX	AN120 (GUN123, GGN125)	7/15 on	2.4D, 4.0	RWD with VSC	Front	BR2716	319	67.5	28	DB1482
					Rear					BS5008
HILUX	AN130 (GUN136)	7/15 on	2.8D	RWD with VSC	Front	BR2716	319	67.5	28	DB1482
					Rear					BS5215
HILUX	AN125, A126 (GUN126)	7/15 on	2.8D	4WD	Front	BR2716	319	67.5	28	DB1482
					Rear					BS5008
HILUX	AN110, A120 GUN112, GUN122	7/15 on	2.4D	RWD	Front	BR2741	296	58.7	30	DB1482
					Rear					BS5215
HILUX	AN110, A120 (GUN135)	5/15 on	2.8D	RWD	Front	BR2741	296	58.7	30	DB1482
					Rear					BS5008
HILUX	AN110, A120 (TGN111-136)	5/15 on	2.7	RWD	Front	BR2741	296	58.7	30	DB2396
					Rear					BS5215
HILUX	AN110, A120 GGN120, GGN135	7/15 on	4.0L	RWD & 4WD	Front	BR2741	296	58.7	30	DB2396
					Rear					BS5215
HILUX	AN110, A120 GUN123	7/15 on	2.8D	RWD	Front	BR2741	296	58.7	30	DB2396
					Rear					BS5008
HILUX	N130 Series GUN136	7/15 on	2.8TD	RWD	Front	BR2741	296	58.7	30	DB2396
					Rear					BS5008
HILUX	AN20 (GGN25)	2/05 on	4.0L	4WD	Front	BR2700	338	68	28	DB1482
					Rear					drum

# ULTIMATE DISC BRAKE ROTORS APPLICATION GUIDE

MODEL	SERIES	YEAR	ENGINE	VEHICLE SPECIFICS	FITTING POS.	ROTOR PART #	DIMENSIONS (mm)			MATCHING BRAKE PAD
							A	D	B	

## TOYOTA *continued*

LAND CRUISER	70 Series	1/1998 - 11/07	4.5L 4.2D, 4.2 TD	FZJ78, FZJ79	Front	BR790	322	65	32	DB1365
					Rear	BR794	312	102.5	18	DB1200
LAND CRUISER	70 Series	3/07 on	4.5TD 24V	VDJ76, VDJ78, VDJ79	Front	BR790	322	65	32	DB1365
					Rear	BR794	312	102.5	18	DB1200
LAND CRUISER	80 Series	3/1998 - 10/07	4.2D, 4.2, 4.5	FJ80 HZJ80	Front	BR790	322	65	32	DB1199
					Rear	BR794	312	102.5	18	DB1200
LAND CRUISER	80 and 100 Series	11/07 - 1/12	4.2D, 4.5, 4.7L	FJ80, FZJ105 HJ80, HDJ105	Front	BR2722	340	83.6	32	DB1838
					Rear	BR2723	345	76.5	18	DB1857
LAND CRUISER	100 Series	3/1998 - 10/07	4.2D, 4.5, 4.7L	FZJ105 HDJ101R, HZJ105	Front	BR790	322	65	32	DB1365
					Rear	BR794	312	102.5	18	DB1200
LAND CRUISER	100 Series	3/1998 - 10/07	4.2D, 4.5	HDJ100, UZJ100	Front	BR790	322	65	32	DB1365
					Rear	BR794	312	102.5	18	DB1383
LAND CRUISER	100 Series	11/07 - 1/12	4.7L	HDJ100, HDJ101R	Front	BR2722	340	83.6	32	DB1838
					Rear	BR2723	345	76.5	18	DB1857
LAND CRUISER	100 Series	11/07 - 1/12	4.7L	HZJ105, UZJ100	Front	BR2722	340	83.6	32	DB1838
					Rear	BR2723	345	76.5	18	DB1857
LAND CRUISER	200 Series	11/07 on	4.5 D4D	VDJ200	Front	BR2722	340	83.6	32	DB1838
					Rear	BR2723	345	76.5	18	DB1857
LAND CRUISER	200 Series	8/07 on	4.7L	UZJ200	Front	BR2722	340	83.6	32	DB1838
					Rear	BR2723	345	76.5	18	DB1857
LAND CRUISER	200 Series	9/10 on	4.6L	URJ202	Front	BR2722	340	83.6	32	DB1838
					Rear	BR2723	345	76.5	18	DB1857
PRADO	90 Series	7/1996 - 5/02	2.7L	RZJ95	Front	BR792	319	70	22	DB1323
					Rear	BR793	312	68	18	DB1200
PRADO	120 Series	3/03 - 8/04	2.7L	TRJ120	Front	BR2700	338	68	28	DB1482
					Rear	BR793	312	68	18	DB1200
PRADO	120 Series	7/04 - 12/10	3.0 D4D	KDJ120,KDJ125	Front	BR2700	338	68	28	DB1482
					Rear	BR793	312	68	18	DB1200
PRADO	120 Series	9/02 - 2/07	3.0 D4D	KZJ120	Front	BR2700	338	68	28	DB1482
					Rear	BR793	312	68	18	DB1200
PRADO	90 Series	3/00 - 2/03	3.0TD	KZJ90,KZJ95	Front	BR792	319	319	70	DB1323
					Rear	BR793	312	312	68	DB1200
PRADO	90 Series	7/1996 - 2/03	3.4L	VZJ90,VZJ95	Front	BR792	319	319	70	DB1323
					Rear	BR793	312	312	68	DB1200
PRADO	120 Series	3/03 - 8/09	4.0L	GRJ120	Front	BR2700	338	68	28	DB1482
					Rear	BR793	312	68	18	DB1200

## VOLKSWAGEN

AMAROK	2H	9/11 on	2.0T, 2.0TD, 2.0TTD		Front	BR2238	303	57	28	DB1915
					Rear	Drum				BS5059
TOUAREG	7LA, 7L6, 7L7	9/03 - 5/10	2.5TD, 3.0TD, 3.2, 3.6	PR Code 1LF 350mm Front	Front	BR2246	350	69	34	DB1676
				PR Code 1KF 330mm Rear	Rear	BR2245	330	74	28	DB1677
TOUAREG	7LA, 7L6, 7L7	9/03 - 5/10	4.2, 5.0	PR Code 1LF 350mm Front	Front	BR2246	350	69	34	DB1676
				PR Code 1KF 330mm Rear	Rear	BR2245	330	74	28	DB1677



# DISC BRAKE ROTORS IDENTIFICATION



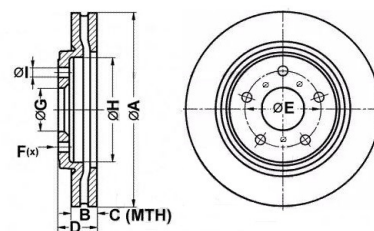
## BR040

### PRIMARY MAKE & MODEL

Holden Commodore  
Standard Caliper VT -VZ (F)

AXLE	COOLING	VANE PATTERN	ROTOR DIRECTION	WEIGHT
Front	Vented	Pillar Construction	Multi	9.4 kg

	A	B	C	D	E	F	G	H	I
DIMENSIONS (mm)	296	28	25	83	120	5	71.5	142.9	12.8



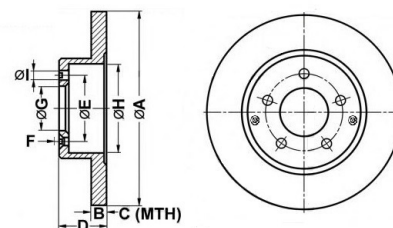
## BR041

### PRIMARY MAKE & MODEL

Holden Commodore  
Standard Caliper VT -VZ (R)

AXLE	COOLING	VANE PATTERN	ROTOR DIRECTION	WEIGHT
Rear	Solid	Solid Rotors	Multi	7 kg

	A	B	C	D	E	F	G	H	I
DIMENSIONS (mm)	286	16	14	78.6	120	5	70	190	12.8



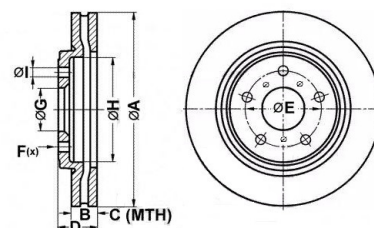
## BR048

### PRIMARY MAKE & MODEL

Holden HSV VT-VZ  
PBR Caliper 9/97-2007(F)

AXLE	COOLING	VANE PATTERN	ROTOR DIRECTION	WEIGHT
Front	Vented	Pillar Construction	Multi	11.3 kg

	A	B	C	D	E	F	G	H	I
DIMENSIONS (mm)	330	32	29	83	120	5	71.5	192	12.8



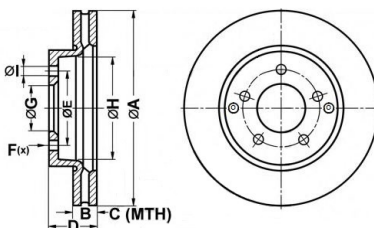
## BR049

### PRIMARY MAKE & MODEL

Holden HSV VT-VZ  
Fits VT- VZ HSV PBR / Harrop (R)

AXLE	COOLING	VANE PATTERN	ROTOR DIRECTION	WEIGHT
Rear	Vented	Pillar Construction	Multi	8 kg

	A	B	C	D	E	F	G	H	I
DIMENSIONS (mm)	315	18	16	71	120	5	70	190	12.8



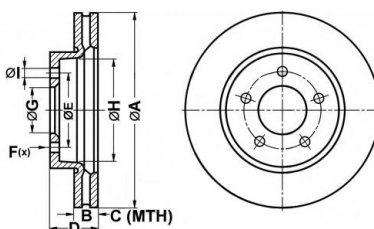
## BR055

### PRIMARY MAKE & MODEL

Holden HSV VT-VZ  
Harrop Caliper 9/97-2007(F)

AXLE	COOLING	VANE PATTERN	ROTOR DIRECTION	WEIGHT
Front	Vented	Pillar Construction	Multi	12 kg

	A	B	C	D	E	F	G	H	I
DIMENSIONS (mm)	343	32	29	82.5	120	5	71.5	220	13.3



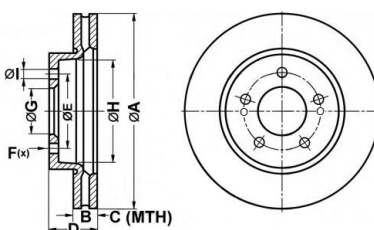
## BR418

### PRIMARY MAKE & MODEL

Mitsubishi Lancer  
EVO V VI VII VIII IX GSR RS2

AXLE	COOLING	VANE PATTERN	ROTOR DIRECTION	WEIGHT
Front	Vented	Pillar Construction	Multi	9.7 kg

	A	B	C	D	E	F	G	H	I
DIMENSIONS (mm)	320	32	29.8	43.5	114.3	5	69	147.3	12.6



**DIMENSIONS KEY:** A: Diameter B: Thickness C: Minimum Thickness D: Height E: Mounting Diameter F: No. of Mounting Holes G: Centre Hole Diameter H: Cavity Diameter I: Hole Diameter

# ULTIMATE DISC BRAKE ROTORS IDENTIFICATION

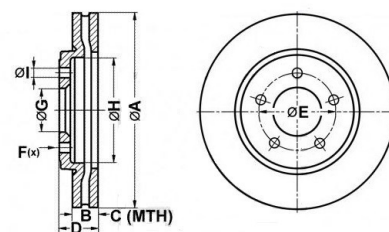
## BR502

### PRIMARY MAKE & MODEL

Ford Falcon AU 2 AU3 Series  
Standard Caliper (F)

**AXLE** Front **COOLING** Vented **VANE PATTERN** Pillar Construction **ROTOR DIRECTION** Multi **WEIGHT** 8 kg

	A	B	C	D	E	F	G	H	I
<b>DIMENSIONS (mm)</b>	287	28	25.6	65	114.3	5	71.8	161	15.7



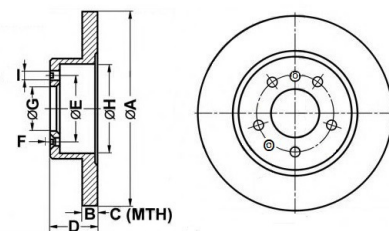
## BR503

### PRIMARY MAKE & MODEL

Ford Falcon AU 2 AU3 Series  
Standard Caliper (R)

**AXLE** Rear **COOLING** Solid **VANE PATTERN** Solid Rotors **ROTOR DIRECTION** Multi **WEIGHT** 6.4 kg

	A	B	C	D	E	F	G	H	I
<b>DIMENSIONS (mm)</b>	287	16	14.5	51	114.3	5	70.5	190	15.7



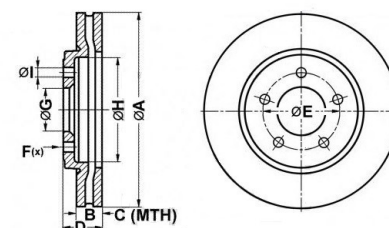
## BR504

### PRIMARY MAKE & MODEL

Ford Falcon BA-FG  
Standard Caliper BA BF FG (F)

**AXLE** Front **COOLING** Vented **VANE PATTERN** Pillar Construction **ROTOR DIRECTION** Multi **WEIGHT** 8.9 kg

	A	B	C	D	E	F	G	H	I
<b>DIMENSIONS (mm)</b>	298	28	26	65	114.3	5	71.8	161	15.7



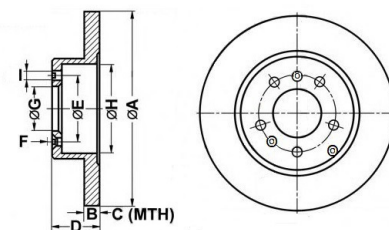
## BR505

### PRIMARY MAKE & MODEL

Ford Falcon BA-FG  
Standard Caliper BA BF FG (R)

**AXLE** Rear **COOLING** Solid **VANE PATTERN** Solid Rotors **ROTOR DIRECTION** Multi **WEIGHT** 7.3 kg

	A	B	C	D	E	F	G	H	I
<b>DIMENSIONS (mm)</b>	303	16	14.5	51	114.3	5	70.5	190	15.7



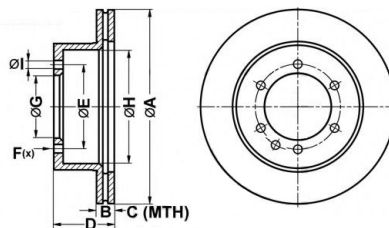
## BR622

### PRIMARY MAKE & MODEL

Nissan Patrol GU Y61 4WD  
Except 4.8L 10/97-2016 (R)

**AXLE** Rear **COOLING** Vented **VANE PATTERN** Straight Vane **ROTOR DIRECTION** Multi **WEIGHT** 7.7 kg

	A	B	C	D	E	F	G	H	I
<b>DIMENSIONS (mm)</b>	315	18	16	80	139	6	111	189	12.8



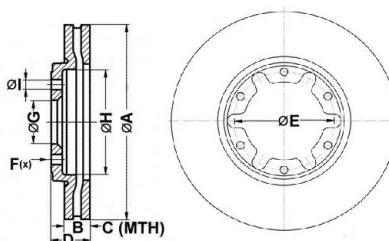
## BR625

### PRIMARY MAKE & MODEL

Nissan Patrol GU Y61 4WD  
Except 4.8L 10/97-2016 (F)

**AXLE** Front **COOLING** Vented **VANE PATTERN** Straight Vane **ROTOR DIRECTION** Multi **WEIGHT** 10 kg

	A	B	C	D	E	F	G	H	I
<b>DIMENSIONS (mm)</b>	306	32	30	47	137	6	109	153.8	12



**DIMENSIONS KEY:** A: Diameter B: Thickness C: Minimum Thickness D: Height E: Mounting Diameter F: No. of Mounting Holes G: Centre Hole Diameter H: Cavity Diameter I: Hole Diameter

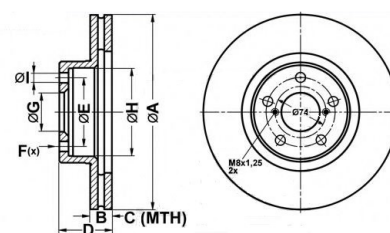
## BR648

### PRIMARY MAKE & MODEL

Subaru BRZ 2.0L Active 6/12-15 (F)  
Also Fit WRX Toyota 86

**AXLE** Front **COOLING** Vented **VANE PATTERN** Straight Vane **ROTOR DIRECTION** Multi **WEIGHT** 6 kg

	A	B	C	D	E	F	G	H	I
<b>DIMENSIONS (mm)</b>	277	24	22	57	100	5	58	129	13



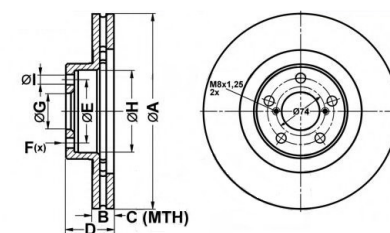
## BR650

### PRIMARY MAKE & MODEL

Subaru BRZ 2.0L Coupe Premium 6/12-15 (F)  
Also Fit WRX Toyota 86

**AXLE** Front **COOLING** Vented **VANE PATTERN** Straight Vane **ROTOR DIRECTION** Multi **WEIGHT** 6.8 kg

	A	B	C	D	E	F	G	H	I
<b>DIMENSIONS (mm)</b>	294	24	22	57	100	5	58	129	13



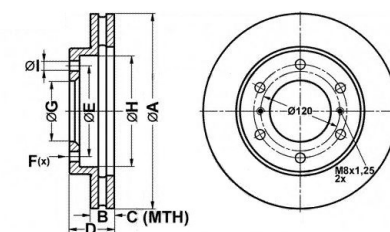
## BR660

### PRIMARY MAKE & MODEL

Mitsubishi Pajero  
NS NT NW NX 3.2L (F)

**AXLE** Front **COOLING** Vented **VANE PATTERN** Straight Vane **ROTOR DIRECTION** Multi **WEIGHT** 6.4 kg

	A	B	C	D	E	F	G	H	I
<b>DIMENSIONS (mm)</b>	290	26	24.4	46	139.7	6	94	171	12.8



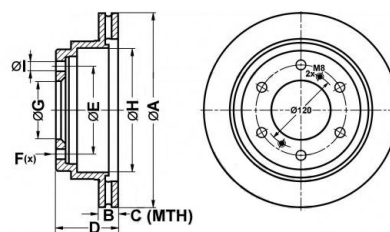
## BR661

### PRIMARY MAKE & MODEL

Mitsubishi Pajero  
NS NT NW NX 3.2L (R)

**AXLE** Rear **COOLING** Vented **VANE PATTERN** Straight Vane **ROTOR DIRECTION** Multi **WEIGHT** 6.5 kg

	A	B	C	D	E	F	G	H	I
<b>DIMENSIONS (mm)</b>	300	22	20.4	72	139.7	6	94	199	12.6



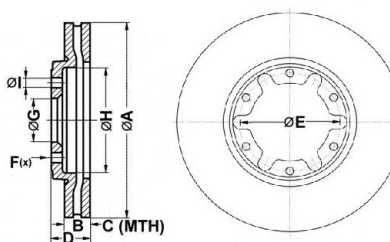
## BR698

### PRIMARY MAKE & MODEL

Nissan Patrol  
GU Y61 4WD 4.8L 9/02-2016

**AXLE** Front **COOLING** Vented **VANE PATTERN** Pillar Construction **ROTOR DIRECTION** Multi **WEIGHT** 10.5 kg

	A	B	C	D	E	F	G	H	I
<b>DIMENSIONS (mm)</b>	316	34	30	47	137	6	109	159	12



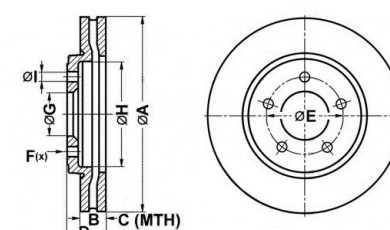
## BR790

### PRIMARY MAKE & MODEL

Toyota Landcruiser  
70 Series 8/1999 - 2015 (F)

**AXLE** Front **COOLING** Vented **VANE PATTERN** Pillar Construction **ROTOR DIRECTION** Multi **WEIGHT** 8 kg

	A	B	C	D	E	F	G	H	I
<b>DIMENSIONS (mm)</b>	322	32	30	65	144	5	115	172	12.9



**DIMENSIONS KEY:** A: Diameter B: Thickness C: Minimum Thickness D: Height E: Mounting Diameter F: No. of Mounting Holes G: Centre Hole Diameter H: Cavity Diameter I: Hole Diameter



# ULTIMATE DISC BRAKE ROTORS IDENTIFICATION

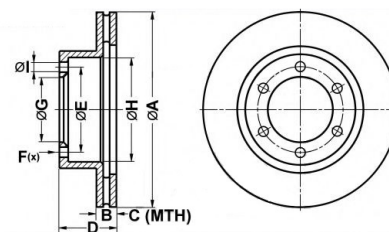
## BR792

### PRIMARY MAKE & MODEL

Toyota Prado  
90 Series 7/96-03 (F)

**AXLE** Front **COOLING** Vented **VANE PATTERN** Straight Vane **ROTOR DIRECTION** Multi **WEIGHT** 6.5 kg

	A	B	C	D	E	F	G	H	I
<b>DIMENSIONS (mm)</b>	319	22	20	70	139.7	6	108	173	14.6



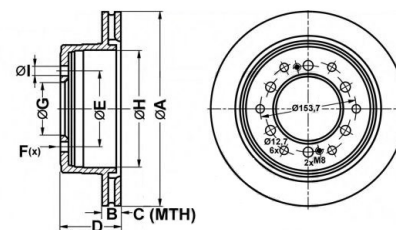
## BR793

### PRIMARY MAKE & MODEL

Toyota Prado  
90 Series 7/96-03 120 Series 10/02-09 (R)

**AXLE** Rear **COOLING** Vented **VANE PATTERN** Straight Vane **ROTOR DIRECTION** Multi **WEIGHT** 6.3 kg

	A	B	C	D	E	F	G	H	I
<b>DIMENSIONS (mm)</b>	312	18	16	68	139.7	6	106	210	14.5



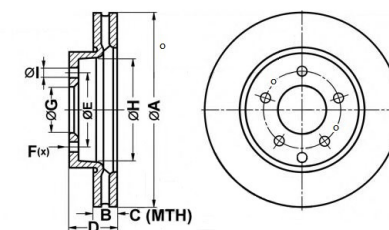
## BR794

### PRIMARY MAKE & MODEL

Toyota Landcruiser  
70 Series 8/1999 - 2015 (R)

**AXLE** Rear **COOLING** Vented **VANE PATTERN** Straight Vane **ROTOR DIRECTION** Multi **WEIGHT** 7.2 kg

	A	B	C	D	E	F	G	H	I
<b>DIMENSIONS (mm)</b>	312	18	16	102.5	150	5	110	206	16.7



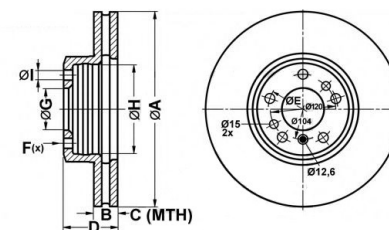
## BR813

### PRIMARY MAKE & MODEL

BMW X5  
E53 3.0 4.4 00-06 (F)

**AXLE** Front **COOLING** Vented **VANE PATTERN** Straight Vane **ROTOR DIRECTION** Multi **WEIGHT** 11.2 kg

	A	B	C	D	E	F	G	H	I
<b>DIMENSIONS (mm)</b>	332	30	28.4	62	120	5	75	158	16.5



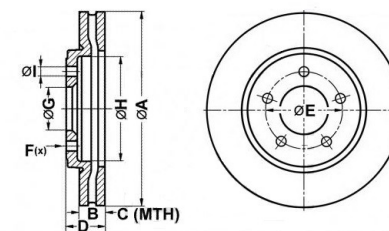
## BR2026

### PRIMARY MAKE & MODEL

Holden Commodore  
VE VF V6 08/06 -on (F)

**AXLE** Front **COOLING** Vented **VANE PATTERN** Pillar Construction **ROTOR DIRECTION** Multi **WEIGHT** 8.1 kg

	A	B	C	D	E	F	G	H	I
<b>DIMENSIONS (mm)</b>	298	30	28	52.2	120	5	67.5	147	16.2



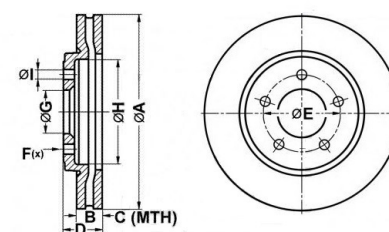
## BR2027

### PRIMARY MAKE & MODEL

Holden Commodore  
VE VF V6 08/06 -on (R)

**AXLE** Rear **COOLING** Vented **VANE PATTERN** Pillar Construction **ROTOR DIRECTION** Multi **WEIGHT** 7.2 kg

	A	B	C	D	E	F	G	H	I
<b>DIMENSIONS (mm)</b>	302	22	20	56	114.3	5	67.4	144	12.8



**DIMENSIONS KEY:** A: Diameter B: Thickness C: Minimum Thickness D: Height E: Mounting Diameter F: No. of Mounting Holes G: Centre Hole Diameter H: Cavity Diameter I: Hole Diameter

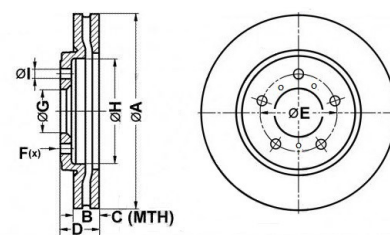
## BR2028

### PRIMARY MAKE & MODEL

Holden Commodore  
VE VF V8 08/06 -on (F)

AXLE	COOLING	VANE PATTERN	ROTOR DIRECTION	WEIGHT
Front	Vented	Pillar Construction	Multi	9.2 kg

	A	B	C	D	E	F	G	H	I
DIMENSIONS (mm)	321	30	28	52.2	120	5	67.5	155	16.2



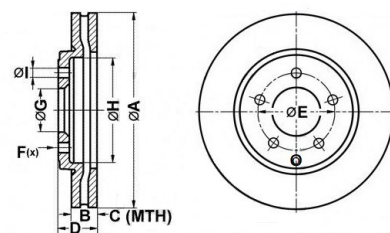
## BR2029L / BR2029R

### PRIMARY MAKE & MODEL

Holden Commodore  
VE VF V8 08/06 -on (R)

AXLE	COOLING	VANE PATTERN	ROTOR DIRECTION	WEIGHT
Rear	Vented	Directional Curved	L and R	8.3 kg

	A	B	C	D	E	F	G	H	I
DIMENSIONS (mm)	324	22	20	56.1	120	5	67.4	190	16.2



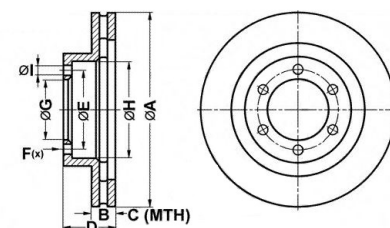
## BR2060

### PRIMARY MAKE & MODEL

Holden Colorado  
RG, Isuzu D Max

AXLE	COOLING	VANE PATTERN	ROTOR DIRECTION	WEIGHT
Front	Vented	Pillar Construction	Multi	7.8 kg

	A	B	C	D	E	F	G	H	I
DIMENSIONS (mm)	330	32	29	83	120	5	71.5	192	12.8



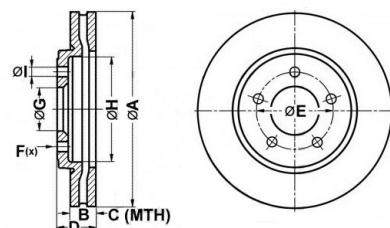
## BR2107

### PRIMARY MAKE & MODEL

Falcon BF FG  
XR6 Turbo XR8 (F)

AXLE	COOLING	VANE PATTERN	ROTOR DIRECTION	WEIGHT
Front	Vented	Pillar Construction	Multi	10.3 kg

	A	B	C	D	E	F	G	H	I
DIMENSIONS (mm)	322	28	26	68	114.3	5	71	161	15.7



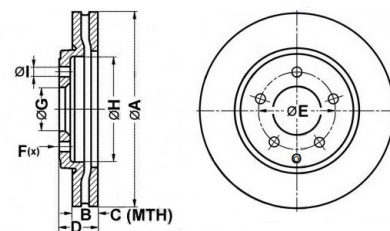
## BR2108

### PRIMARY MAKE & MODEL

Falcon BF FG  
XR6 Turbo XR8 (R)

AXLE	COOLING	VANE PATTERN	ROTOR DIRECTION	WEIGHT
Rear	Vented	Pillar Construction	Multi	9.2 kg

	A	B	C	D	E	F	G	H	I
DIMENSIONS (mm)	328	26	24	58.5	114.3	5	70.5	190	15.7



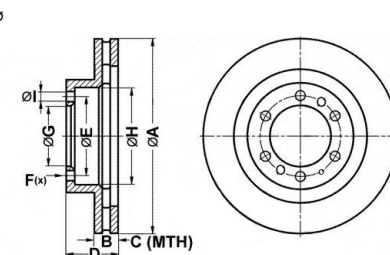
## BR2132

### PRIMARY MAKE & MODEL

Ford Ranger,  
Mazda BT-50

AXLE	COOLING	VANE PATTERN	ROTOR DIRECTION	WEIGHT
Front	Vented	Pillar Construction	Multi	10.7 kg

	A	B	C	D	E	F	G	H	I
DIMENSIONS (mm)	301.5	32	30	60.7	139.7	6	98	163.1	13.1



**DIMENSIONS KEY:** A: Diameter B: Thickness C: Minimum Thickness D: Height E: Mounting Diameter F: No. of Mounting Holes G: Centre Hole Diameter H: Cavity Diameter I: Hole Diameter

# ULTIMATE DISC BRAKE ROTORS IDENTIFICATION

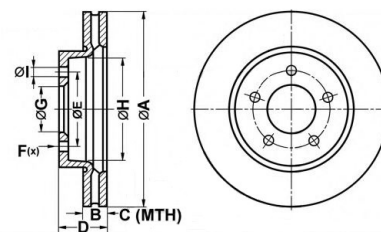
## BR2164

### PRIMARY MAKE & MODEL

Ford Mustang  
Premium High Series Performance 2015 -on (F)

**AXLE** Front **COOLING** Vented **VANE PATTERN** Oval Vane **ROTOR DIRECTION** Multi **WEIGHT** 13 kg

	A	B	C	D	E	F	G	H	I
<b>DIMENSIONS (mm)</b>	352	32	30	64	114.3	5	71	159	15.8



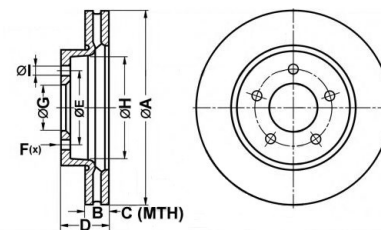
## BR2165

### PRIMARY MAKE & MODEL

Ford Mustang  
All Rear 2015 - on (R)

**AXLE** Rear **COOLING** Vented **VANE PATTERN** Straight Vane **ROTOR DIRECTION** Multi **WEIGHT** 11 kg

	A	B	C	D	E	F	G	H	I
<b>DIMENSIONS (mm)</b>	330	25	23	43.7	114.3	5	71	175.8	15.8



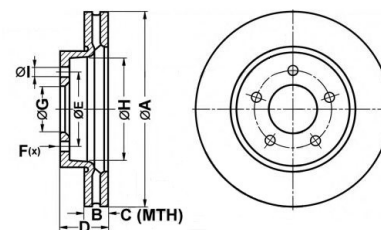
## BR2166

### PRIMARY MAKE & MODEL

Ford Mustang Brembo Caliper 2015-on (F)

**AXLE** Front **COOLING** Vented **VANE PATTERN** Pillar Construction **ROTOR DIRECTION** Multi **WEIGHT** 15.5 kg

	A	B	C	D	E	F	G	H	I
<b>DIMENSIONS (mm)</b>	380	34	31.6	64	114.3	5	71	166.5	15.8



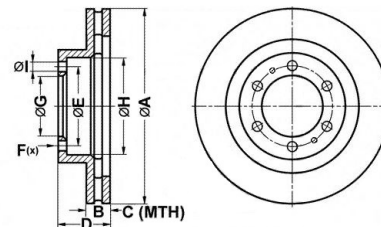
## BR2208

### PRIMARY MAKE & MODEL

Mitsubishi Triton ML,MN,MQ,MR

**AXLE** Front **COOLING** Vented **VANE PATTERN** Pillar Construction **ROTOR DIRECTION** Multi **WEIGHT** 7.1 kg

	A	B	C	D	E	F	G	H	I
<b>DIMENSIONS (mm)</b>	294.4	28	26.4	46.5	139.7	6	94	171	12.6



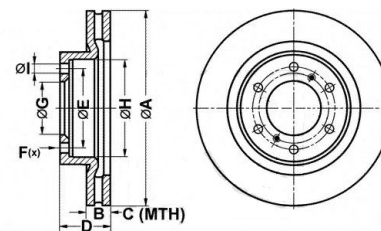
## BR2216

### PRIMARY MAKE & MODEL

Mitsubishi Pajero Diesel Turbo 2007-2015 (F)

**AXLE** Front **COOLING** Vented **VANE PATTERN** Straight Vane **ROTOR DIRECTION** Multi **WEIGHT** 9.4 kg

	A	B	C	D	E	F	G	H	I
<b>DIMENSIONS (mm)</b>	332	28	26	56.7	139.7	6	94	171	12.8



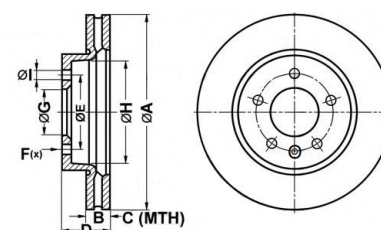
## BR2238

### PRIMARY MAKE & MODEL

VW Amarok 2011-on (F)

**AXLE** Front **COOLING** Vented **VANE PATTERN** Pillar Construction **ROTOR DIRECTION** Multi **WEIGHT** 8.4 kg

	A	B	C	D	E	F	G	H	I
<b>DIMENSIONS (mm)</b>	303	28	26	56.9	120	5	76	165	16.6



**DIMENSIONS KEY:** A: Diameter B: Thickness C: Minimum Thickness D: Height E: Mounting Diameter F: No. of Mounting Holes G: Centre Hole Diameter H: Cavity Diameter I: Hole Diameter



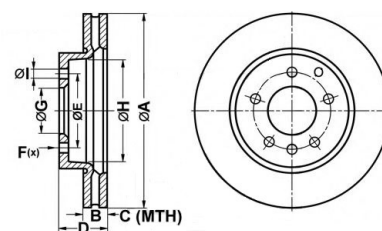
## BR2245

### PRIMARY MAKE & MODEL

Porsche Cayenne V6 S / Turbo 2004 -on (R)  
Also Fit Audi Q7 VW Touareg

AXLE	COOLING	VANE PATTERN	ROTOR DIRECTION	WEIGHT
Rear	Vented	Straight Vane	Multi	8.6 kg

	A	B	C	D	E	F	G	H	I
DIMENSIONS (mm)	330	28	26	74	130	5	85	207.5	15.4



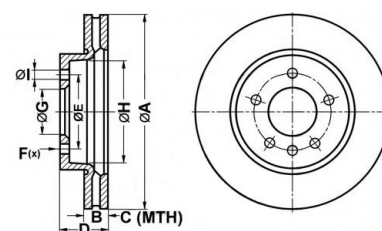
## BR2246L / BR2246R

### PRIMARY MAKE & MODEL

Porsche Cayenne V6 S / Turbo 2004 -on (F)  
Also Fit Audi Q7 VW Touareg

AXLE	COOLING	VANE PATTERN	ROTOR DIRECTION	WEIGHT
Front	Vented	Directional Curved	L and R	12.1 kg

	A	B	C	D	E	F	G	H	I
DIMENSIONS (mm)	350	34	32	69	130	5	85	184.8	15.4



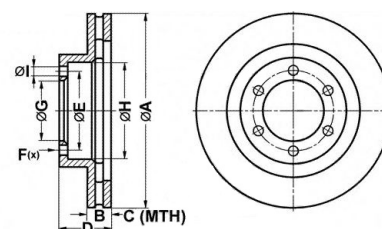
## BR2332

### PRIMARY MAKE & MODEL

Nissan Navara  
D23

AXLE	COOLING	VANE PATTERN	ROTOR DIRECTION	WEIGHT
Front	Vented	Pillar Construction	Multi	8.1 kg

	A	B	C	D	E	F	G	H	I
DIMENSIONS (mm)	295.6	28	26	53	114.3	6	68	154.5	12.7



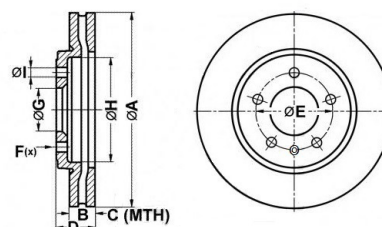
## BR2604

### PRIMARY MAKE & MODEL

Holden Commodore  
VE VF SSV Redline 2010-on (F)

AXLE	COOLING	VANE PATTERN	ROTOR DIRECTION	WEIGHT
Front	Vented	Pillar Construction	Multi	11.6 kg

	A	B	C	D	E	F	G	H	I
DIMENSIONS (mm)	355	32	30	50	120	5	67.4	165.7	16.3



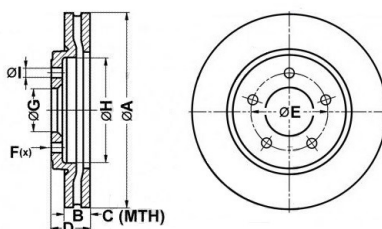
## BR2632

### PRIMARY MAKE & MODEL

Jeep Grand Cherokee  
SRT WK WK2 380mm Front

AXLE	COOLING	VANE PATTERN	ROTOR DIRECTION	WEIGHT
Front	Vented	Pillar Construction	Multi	15.5 kg

	A	B	C	D	E	F	G	H	I
DIMENSIONS (mm)	380	34	32	54	127	5	72	173.8	17



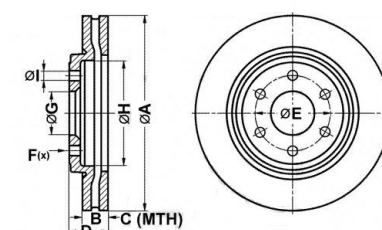
## BR2700

### PRIMARY MAKE & MODEL

Toyota Prado  
90 Series 7/96-03 120 Series 10/02-09 (F)

AXLE	COOLING	VANE PATTERN	ROTOR DIRECTION	WEIGHT
Front	Vented	Straight Vane	Multi	9.2 kg

	A	B	C	D	E	F	G	H	I
DIMENSIONS (mm)	338	28	26	68	139.7	6	108	172	14.5



**DIMENSIONS KEY:** A: Diameter B: Thickness C: Minimum Thickness D: Height E: Mounting Diameter F: No. of Mounting Holes G: Centre Hole Diameter H: Cavity Diameter I: Hole Diameter

# ULTIMATE DISC BRAKE ROTORS IDENTIFICATION

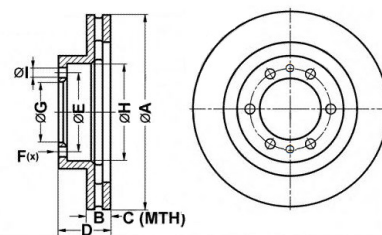
## BR2714

### PRIMARY MAKE & MODEL

Hilux 4.0 4WD - GGN25 (F),  
3.0D 4WD KUN26 no VSC

AXLE	COOLING	VANE PATTERN	ROTOR DIRECTION	WEIGHT
Front	Vented	Pillar Construction	Multi	7.7 kg

	A	B	C	D	E	F	G	H	I
DIMENSIONS (mm)	297	25	23	67.5	139.7	6	108	170	14.55



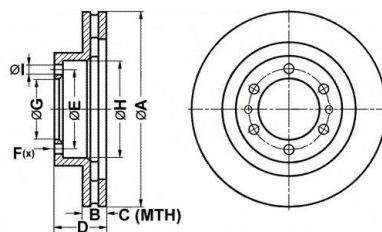
## BR2716

### PRIMARY MAKE & MODEL

Hilux 4.0 4WD - GGN25 (F),  
3.0D 4WD KUN26 with VSC

AXLE	COOLING	VANE PATTERN	ROTOR DIRECTION	WEIGHT
Front	Vented	Pillar Construction	Multi	8.3 kg

	A	B	C	D	E	F	G	H	I
DIMENSIONS (mm)	319	28	26	67.5	139.7	6	108	172.2	14.55



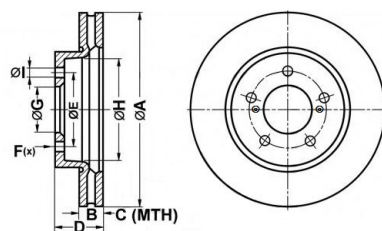
## BR2722

### PRIMARY MAKE & MODEL

Toyota Landcruiser  
200 Series UZJ200 VDJ200 Twin Turbo Diesel

AXLE	COOLING	VANE PATTERN	ROTOR DIRECTION	WEIGHT
Front	Vented	Straight Vane	Multi	10.4 kg

	A	B	C	D	E	F	G	H	I
DIMENSIONS (mm)	340	32	29	83.6	150	5	112	183	16.6



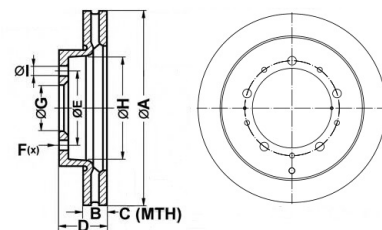
## BR2723

### PRIMARY MAKE & MODEL

Toyota Landcruiser  
200 Series UZJ200 VDJ200 Twin Turbo Diesel

AXLE	COOLING	VANE PATTERN	ROTOR DIRECTION	WEIGHT
Rear	Vented	Straight Vane	Multi	7.5 kg

	A	B	C	D	E	F	G	H	I
DIMENSIONS (mm)	345	18	16	76.5	150	5	112	240	16.6



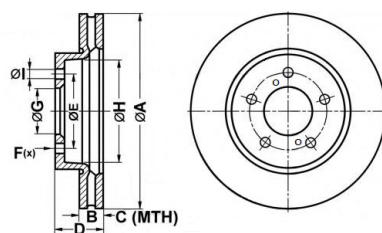
## BR2741

### PRIMARY MAKE & MODEL

Hilux 2.4D,  
4.0 RWD Ute and Cab

AXLE	COOLING	VANE PATTERN	ROTOR DIRECTION	WEIGHT
Front	Vented	Pillar Construction	Multi	9.2 kg

	A	B	C	D	E	F	G	H	I
DIMENSIONS (mm)	296	30	27	58.7	114.3	5	62	144.2	14.5



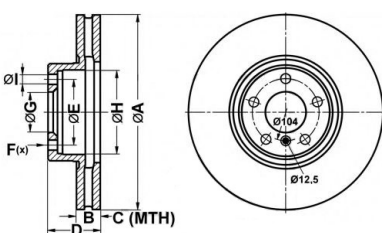
## BR2864

### PRIMARY MAKE & MODEL

BMW X5  
E70 3.0 4.8 07- 13 (F)

AXLE	COOLING	VANE PATTERN	ROTOR DIRECTION	WEIGHT
Front	Vented	Straight Vane	Multi	12.1 kg

	A	B	C	D	E	F	G	H	I
DIMENSIONS (mm)	348	30	28.4	62	120	5	75	154	16.5



DIMENSIONS KEY: A: Diameter B: Thickness C: Minimum Thickness D: Height E: Mounting Diameter F: No. of Mounting Holes G: Centre Hole Diameter H: Cavity Diameter I: Hole Diameter

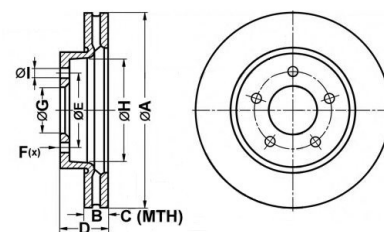
## BR9605

### PRIMARY MAKE & MODEL

Holden HSV  
VE LS2 LS3 V8 2006-2013 (F)

**AXLE** Front **COOLING** Vented **VANE PATTERN** Pillar Construction **ROTOR DIRECTION** Multi **WEIGHT** 11 kg

	A	B	C	D	E	F	G	H	I
<b>DIMENSIONS (mm)</b>	365	32	30	54	120	5	67.4	183	16.4



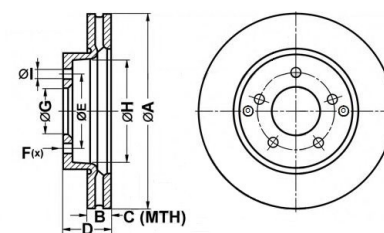
## BR9606

### PRIMARY MAKE & MODEL

Holden HSV  
VE LS2 LS3 V8 2006-2013 (R)

**AXLE** Rear **COOLING** Vented **VANE PATTERN** Pillar Construction **ROTOR DIRECTION** Multi **WEIGHT** 10.3 kg

	A	B	C	D	E	F	G	H	I
<b>DIMENSIONS (mm)</b>	350	26	24	51.5	120	5	67.4	190	16.4



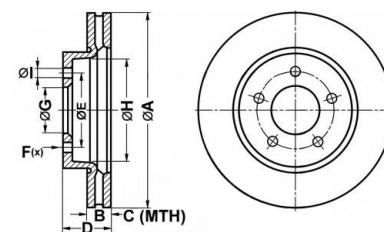
## BR9607

### PRIMARY MAKE & MODEL

Ford FPV  
BA - FG Premium Brakes (F)

**AXLE** Front **COOLING** Vented **VANE PATTERN** Pillar Construction **ROTOR DIRECTION** Multi **WEIGHT** 12.6 kg

	A	B	C	D	E	F	G	H	I
<b>DIMENSIONS (mm)</b>	355	32	30	50.5	114.3	5	71.8	172	15.7



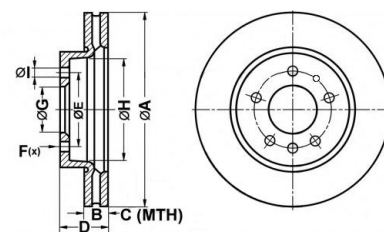
## BR9608

### PRIMARY MAKE & MODEL

Ford FPV  
BA - FG Premium Brakes (R)

**AXLE** Rear **COOLING** Vented **VANE PATTERN** Pillar Construction **ROTOR DIRECTION** Multi **WEIGHT** 9.7 kg

	A	B	C	D	E	F	G	H	I
<b>DIMENSIONS (mm)</b>	330	28	26	51	114.3	5	70.5	190	15.5



**DIMENSIONS KEY:** A: Diameter B: Thickness C: Minimum Thickness D: Height E: Mounting Diameter F: No. of Mounting Holes G: Centre Hole Diameter H: Cavity Diameter I: Hole Diameter










## NOTES

[illegible]

## FOR EVERY DRIVING STYLE, BENDIX HAS THE RIGHT BRAKE PAD

To achieve the best possible braking performance and stopping distance, it's important to match the driving style and vehicle with the right brake pad formulation. You can select and fit the right Bendix brake pad for virtually every application with absolute confidence.

BENDIX BRAKE PAD SELECTION GUIDE							
VEHICLE TYPE	LIGHT/SMALL	MEDIUM/LARGE	4WD/SUV	PEOPLE MOVER	EUROPEAN	SPORTS	VAN/PICKUP/UTE
							
	ACCENT, CENTRO, CIVIC, COROLLA, CRUZE, ELANTRA, FOCUS, i30, JAZZ, LANCER, MAZDA 2, MAZDA 3, PULSAR, RIO, SWIFT, YARIS	ACCORD, AURION, CAMRY, COMMODORE, FALCON, i40, LIBERTY, MAGNA, MAZDA 6, MONDEO, VECTRA	CR-V, FORESTER, GRAND CHEROKEE, PRADO, iX35, KLUGER, LANDCRUISER, PAJERO, PATHFINDER, PATROL, RAV4, TERRITORY, X-TRAIL	CARNIVAL, iMAX, ODYSSEY, RONDO, STAVIC, TARAGO, VOYAGER	AUDI A4, A6 & A8, BMW 1, 3, 4, & 5 SERIES, DISCOVERY, GOLF, MINI, MERCEDES A & C CLASS, VOLVO S & V SERIES,	CELICA, FPV, HSV, EVO, MONARO, WRX	BT-50, COLORADO, D-MAX, HIACE, HILUX, iLOAD, NAVARA, RANGER, TRANSPORTER, TRITON, VITO, TRANSIT
GENERAL SUBURBAN	GENERAL CT	GENERAL CT	4WD/SUV	GENERAL CT	EURO+	ULTIMATE	HEAVY DUTY
COUNTRY	GENERAL CT	GENERAL CT	4WD/SUV	GENERAL CT	EURO+	ULTIMATE	HEAVY DUTY
FREEWAY	GENERAL CT	GENERAL CT	4WD/SUV	GENERAL CT	EURO+	ULTIMATE	HEAVY DUTY
HILLS & STEEP DECLINES	GENERAL CT HEAVY DUTY**	GENERAL CT HEAVY DUTY**	4WD/SUV HEAVY DUTY**	GENERAL CT HEAVY DUTY**	EURO+ HEAVY DUTY**	ULTIMATE	HEAVY DUTY
TOWING	GENERAL CT HEAVY DUTY**	GENERAL CT HEAVY DUTY**	4WD/SUV HEAVY DUTY**	GENERAL CT HEAVY DUTY**	EURO+ HEAVY DUTY**	ULTIMATE	HEAVY DUTY
HIGH-PERFORMANCE STREET	ULTIMATE	ULTIMATE	ULTIMATE ULTIMATE 4WD		ULTIMATE	ULTIMATE	ULTIMATE ULTIMATE 4WD
	STREET ROAD TRACK*	STREET ROAD TRACK*			STREET ROAD TRACK*	STREET ROAD TRACK*	
	ULTIMATE ROTORS	ULTIMATE ROTORS			ULTIMATE ROTORS	ULTIMATE ROTORS	
HIGH-PERFORMANCE TRACK	STREET ROAD TRACK*	STREET ROAD TRACK*	Not advisable to race these vehicles.		STREET ROAD TRACK*	STREET ROAD TRACK*	Not advisable to race these vehicles.
Contact the Bendix Brake Advice Centre on 1800 819 666 regarding Bendix brakes for track use.      *Suitable for daily street use and track. **For regular use in tough conditions.							

Also find an interactive Brake Pad Selection Guide on the **Bendix Website** or on the **Bendix Catalogue App**

**OE  
LOGBOOK  
SERVICING**

**OE LOGBOOK SERVICING**

Bendix brake components are appropriate for the purpose intended and if installed by qualified staff, to the vehicle manufacturer's specifications, can be used in logbook servicing.

**LEADING  
TECHNOLOGY**

**LEADING TECHNOLOGY**

Bendix engineers are dedicated to building more control, less noise and faster installation into every new product we create.

**CHOOSE THE RIGHT PART FOR YOUR VEHICLE ONLINE AT [BENDIX.COM.AU](https://www.bendix.com.au)**  
Or Freecall the Bendix Brake Advice Centre on **1800 819 666**

© 2019 FMP Group (Australia) Pty Ltd. Bendix is a trademark of Garrett Advancing Motion Inc. This book is subject to copyright. Except as permitted under the Copyright Act 1968 (Cth), no part of this book may be reproduced or transmitted in any form or by any means, or stored in any retrieval system of any nature, without the prior written permission of the copyright owner. Whilst every endeavour is made to ensure that the information produced is correct, no responsibility for the contents of this supplement is accepted. Reproduction of any kind whatsoever, in whole or in part, is subject to our express approval. For this purpose, please contact the Marketing Department of FMP on (03) 9244 7000 or +61 3 5327 0211 from outside Australia.

NOTE: Brakes are a critical safety system of a vehicle. The brake system should not be interfered with by anybody who does not have the appropriate skills and experience. Brake pads should be replaced by a qualified mechanic.

**FOR MORE INFORMATION ABOUT THESE PRODUCTS**

Freecall the Bendix Brake Advice Centre on  
**1800 819 666** (8am-5pm Monday to Friday EST)  
or **+61 3 5327 0211** from overseas.  
Visit our website [bendix.com.au](https://www.bendix.com.au) / [bendix.co.nz](https://www.bendix.co.nz) or  
email us, [brakeadvicecentre@bendix.com.au](mailto:brakeadvicecentre@bendix.com.au)

***Put your foot down  
with confidence™***

