



TECHNICAL BULLETIN

OCTOBER 2018

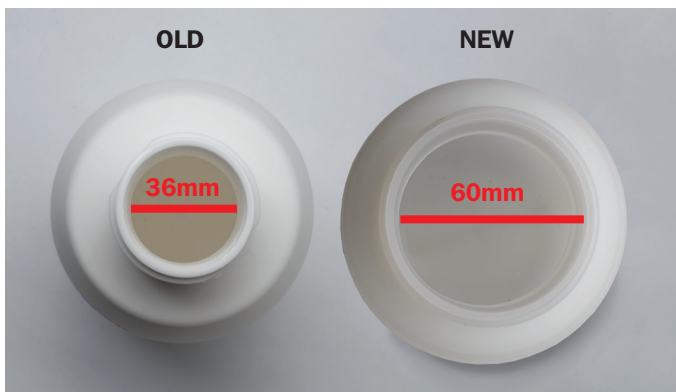
The new Bendix Brake Cleaner Spray Bottle

The **Bendix Brake Cleaner spray bottle (BBL1-PUMP)** is specifically designed for use with hydrocarbon-based solvents, lubricants and petroleum products, applicable for brake cleaning, vehicle bodyworks, machinery and engine cleaning, degreasing, waterproofing and de-waxing fluids.

The Bendix Brake Cleaner spray bottle offers a number of features:

a) WIDE filling aperture (60mm) for easy refilling and minimise risk of chemical spill.

c) VISIBLE liquid level – Translucent tank with liquid level indication.



b) SAFETY valve with depressurization option.



- d) ERGONOMIC** pump and handle for comfortable operating.



- f) SUITABLE** material nozzle and high quality O-ring and gasket to withstand brake cleaner active ingredient.



- e) PROTECTIVE** sleeve – To prevent direct chemical contact and wear and tear on the gasket, hence extend lifespan and usage.



Product Testing

The sprayer has been tested with several high concentrations of the most common solvents, for example:

- a)** Naptha
- b)** Xylene
- c)** White Spirit
- d)** Decane
- e)** Heptane

The sprayer has also been tested in extreme conditions to ensure no leakage, deformation, pressure loss, or pumping mechanism failure and that the valve and seal maintain there integrity.

The product was tested at:

- a)** Maximum operation pressure at 14.5 PSI (3 bar)
- b)** 40 Degrees Celsius
- c)** For 15 days



Changing from a Brass to Plastic Nozzle

The brass/metal nozzles may seem better quality and robust, there is however a hidden issue that commonly goes unnoticed, brass nozzles are subject to higher erosion compared to “plastic” nozzles that are specifically made for brake cleaning application.

Two reasons for using a “plastic” nozzle:

1. The particular “plastic” material that Bendix is using has been developed to be used with brake cleaners. Active ingredients used in brake cleaners can cause aggressive erosion unless a special material is used.
2. A study was carried out to compare against brass/metal nozzle, in fact after certain period of spraying, the nozzle orifice increased and resulted in leaking and increase brake cleaner consumption.

Spare parts

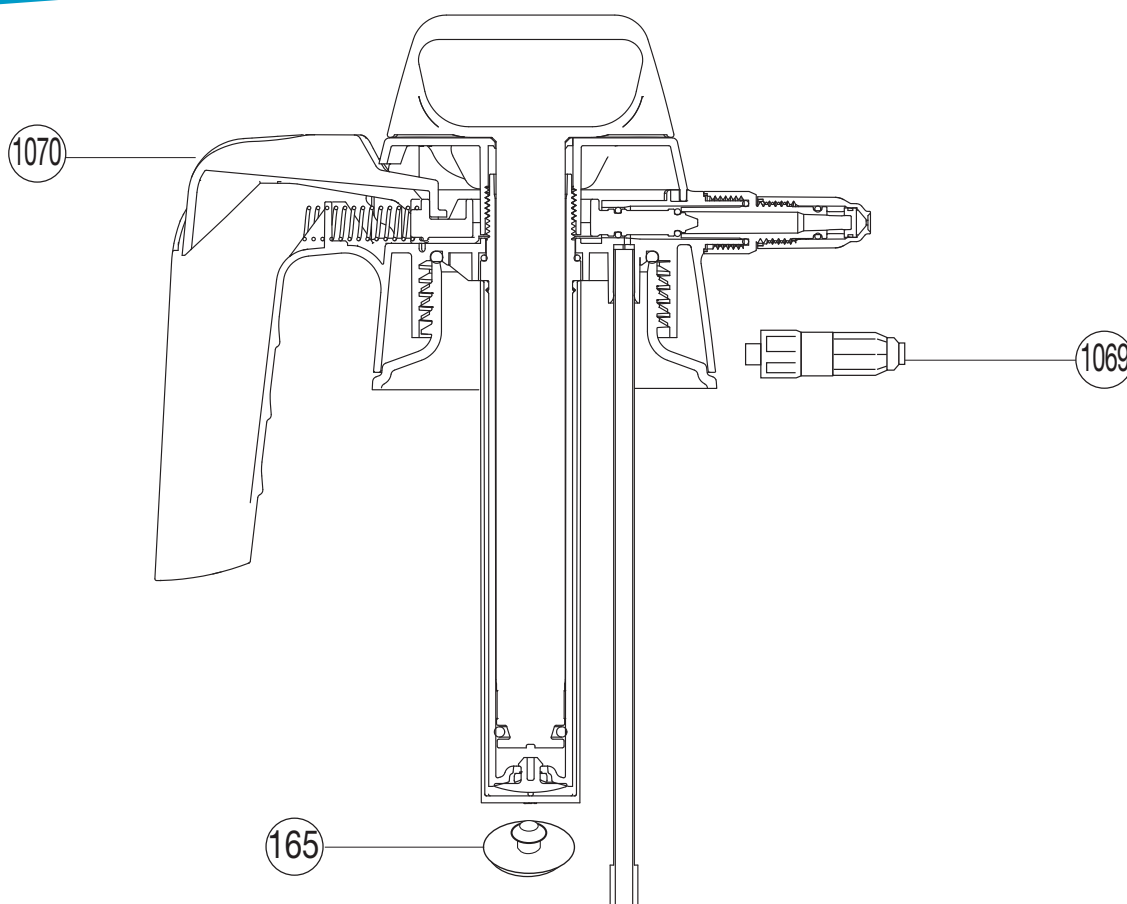
Like all spray bottles, over time, with use of chemicals, parts fail. This is why we offer a range of replacement parts for order when required.

BBC1L - CHAMBER (1070)

BBC1L - GASKET (098)

BBC1L - NOZZLE (1069)

BBC1L - VALVE (165)



To find your nearest Bendix stockist, visit
www.bendix.com.au/stockists

To follow us on Facebook for the latest updates and news, visit
www.facebook.com/bendixworkshop



FOR MORE INFORMATION

Freecall the Bendix Brake Advice Centre on
1800 819 666 (8am-5pm Monday to Friday EST)
or +61 3 5327 0211 from overseas.
brakeadvicecentre@bendix.com.au
bendix.com.au or bendix.co.nz



*Bendix brake components are appropriate for the purpose intended and if installed by qualified staff, to the vehicle manufacturer's specifications, can be used in logbook servicing.

Put your foot down with confidence™